

BMJ Open Impact of lifetime opioid exposure on arterial stiffness and vascular age: cross-sectional and longitudinal studies in men and women

Albert Stuart Reece, Gary Kenneth Hulse

To cite: Reece AS, Hulse GK. Impact of lifetime opioid exposure on arterial stiffness and vascular age: cross-sectional and longitudinal studies in men and women. *BMJ Open* 2014;**4**:e004521. doi:10.1136/bmjopen-2013-004521

► Prepublication history and additional material is available. To view please visit the journal (<http://dx.doi.org/10.1136/bmjopen-2013-004521>).

Received 21 November 2013
Revised 5 May 2014
Accepted 13 May 2014



CrossMark

School of Psychiatry and Clinical Neurosciences, University of Western Australia, Crawley, Western Australia, Australia

Correspondence to

Dr Albert Stuart Reece;
sreece@bigpond.net.au

ABSTRACT

Objective: To characterise and compare the potentiation of arterial stiffness and vascular ageing by opioids in men and women.

Design: Cross-sectional and longitudinal studies of 576 clinical controls and 687 opioid-dependent patients (ODP) on 710 and 1305 occasions, respectively, over a total of 2382 days (6.52 years), 2006–2011. Methodology Radial pulse wave analysis with Atcor SphygmoCor system (Sydney).

Setting: Primary care.

Participants: *Controls:* General practice patients with non-cardiovascular disorders, and university student controls. *ODP:* Patients undergoing clinical management of their opioid dependence. Controls had lower chronological ages (CAs) than ODP (30.0 ± 0.5 vs 34.5 ± 0.3 , mean \pm SEM, $p < 0.0001$). 69.6% and 67.7% participants were men, and 16% and 92.3% were smokers ($p < 0.0001$) for controls and ODP, respectively. 86.3%, 10.3% and 3.4% of ODP were treated with buprenorphine (6.98 ± 0.21 mg), methadone (63.04 ± 4.01 mg) or implant naltrexone, respectively. Body mass index (BMI) was depressed in ODP.

Interventions: Nil.

Primary outcome measures: Vascular Reference Age (RA) and the ratio of vascular age to chronological age (RA/CA).

Secondary outcome measures: Arterial stiffness including Augmentation Index.

Results: After BMI adjustment, RA in ODP was higher as a function of CA and of time (both $p < 0.05$). Modelled mean RA in control and ODP was 35.6 and 36.3 years ($+1.97\%$) in men, and 34.5 and 39.2 years ($+13.43\%$) in women, respectively. Changes in RA and major arterial stiffness indices were worse in women both as a factor ($p = 0.0036$) and in interaction with CA ($p = 0.0040$). Quadratic, cubic and quartic functions of opioid exposure duration outperformed linear models with RA/CA over CA and over time. The opioid dose–response relationship persisted longitudinally after multiple adjustments from $p = 0.0013$ in men and $p = 0.0073$ in women.

Conclusions: Data show that lifetime opioid exposure, an interactive cardiovascular risk factor, particularly in women, is related to linear, quadratic, cubic and quartic functions of treatment duration and is consistent with other literature of accelerated ageing in patients with OD.

Strengths and limitations of this study

- With 576 controls and 687 OPD the large size of this study was a significant advantage, as was its combined cross-sectional and longitudinal design, its ability to control for many cardiovascular risk factors, the sex-specific analysis and the diverse output of cardiovascular parameters of the Atcor/SphygmoCor Pulse Wave Analysis technology employed.
- The use of detailed statistical modelling of relationships between factors, dose–response modelling, polynomial modelling in opioid exposure duration, inter-quartile trend effects and adjustment for known cardiovascular risk factors added further analytical power to the study.
- As the major study limitation was its lack of other measures of organism ageing and its lack of mechanistic and ageing medicine-specific biomarkers; further studies incorporating these refinements are indicated.

INTRODUCTION

Opioid dependence is a condition of increasing public health importance.

Opioid dependence is associated with an impressive array of traditional and novel cardiovascular risk factors and associations including hypertension,¹ hyperlipidaemia,^{2–3} tobacco consumption,⁴ increased body weight,⁴ hyperglycaemia,³ hyperfibrinogenemia,³ diffuse polyclonal gammopathy and immune stimulation,^{5–6} elevated high sensitivity C reactive protein (CRP),⁷ elevated cytokines,⁸ relative hypercalcaemia⁹ and hyperphosphataemia⁹ and reduced circulating endothelial progenitor cells.¹⁰ Furthermore, opioid dependence has been associated with atherosclerotic disease in the coronary^{11–18} and cerebral^{14–18} circulations. In a 33 year review of an opioid maintenance programme in California in 2004, death from cardiovascular disease was noted to account for three times

as many years of life lost in the treatment group than in the general population.¹⁸ In 2007 an Iranian surgical group identified that opium-dependent patients were at increased risk of requiring open coronary revascularisation with an OR of 1.8 after adjustment for other risk factors.¹⁵ Moreover, in this series there was a dose-response relationship between the amount of opioids consumed and the severity of the coronary disease. It was also shown that coronary disease occurred 2 years earlier in opioid-dependent persons than in controls.¹⁶ This group further identified that opium use was the strongest cardiovascular risk factor in their population of men, with effects greater than traditional risk factors.¹⁷ The sex-specific finding in this study was felt to be related only to a reduced prevalence of opium consumption among women.

In reviewing over 800 fatal cases of opioid toxicity in Australia in 2006, Darke *et al*¹² found that 17% of decedents over the age of 44 years had coronary stenoses in excess of 75%. Similarly, when comparing 1193 post-mortem cases of heroin and methadone toxicity, the Sydney group found 2–3 times elevated adjusted ORs of ventricular hypertrophy, and myocardial, interstitial and perivascular fibrosis in the methadone-treated group, consistent with the effects of more consistent opioid agonism in such patients.¹¹ In a 21-year follow-up of 42 676 patients undergoing maintenance opioid agonist treatment in Australia, including 425 998 person-years, Degenhardt *et al*¹³ identified cardiovascular death as occurring 2.2 times as often as in the wider community. Indeed, in this study, elevated rates of death with severe organ dysfunction were noted which appeared to act as a backdrop to the very high rates of death by overdose generally reported in such cohorts (see Web appendix 6 of this citation).

In 2012, a prospective population-based study of 50 045 people, including 234 098 person-years, reported HRs of death from coronary artery disease (CAD) of 1.9-fold (95% CI 1.57 to 2.29) and from cerebrovascular disease (CeVD) of 1.68-fold (CI 1.29 to 2.18).¹⁴ Both were worse in women (CAD: male adjusted HR (AHR) 1.58, female AHR 2.90; CeVD male AHR 1.49, female AHR 1.97). An earlier study from Iran did not confirm the cardiovascular salience of opioid exposure among women as compared to men, but the number of exposed women in this study was small, which likely compromised the power of the analysis to detect an effect.¹⁷ Furthermore, recent reports of 1263 patients found elevated rates of vascular age in patients treated with methadone compared with other agents¹⁹ and improved vascular ages accompanying the long-term drug-free condition.²⁰

One large case control study found a dose-response relationship between opium exposure and the severity of angiographically assessed CAD in a diabetic population.²¹

Moreover, opioid patients dependent on short-acting opioids such as morphine, oxycodone and heroin

undergo the clinical syndrome of opioid withdrawal several times daily. This syndrome is a hyper-adrenergic state characterised by neurological and cardiovascular stimulation which in its more severe manifestations includes hypertension and tachycardia²² and a reduction of subendocardial perfusion.²³ This negative aversive experience is one of the key reasons many opioid-dependent patients (ODP) continue to use narcotics.

Important as the above collected findings are, other evidence suggests that the impact of elevated vascular age has implications on the health and ageing of an organism as a whole beyond those limited primarily to the cardiovascular system. It has been repeatedly proposed that vascular ageing is a principal component of biological organismal ageing by virtue of the contribution made by cardiovascular causes to the overall death rate in developed nations, and also the importance of the vascular niche common to many stem cell beds.^{24 25} This view closely accords with the findings in many of the above studies and particularly that by Degenhardt *et al*¹³ that elevated rates of overdose occur on the background of advanced disease in other organs.^{1 12 18} ODP have many stigmata of accelerated ageing including increased rates of hair greying, erosion of alveolar bone from chronic periodontitis,²⁶ osteoporosis,²⁷ chronic respiratory disease,^{11 13 18} chronic renal disease,¹¹ diffuse senescent-mimetic immune stimulation,^{5 6 28} diabetes,³ neuropsychiatric disorders, multisystem disease,^{11 12} reduced circulating stem cell counts¹⁰ and many malignancies.^{13 29} Thus the call has been made for geriatricians to be appointed to the care of ODP beyond the age of 50 years, due to the high prevalence of multisystem disease.¹

The possibility therefore arises that an improved understanding of the increased and accelerated profile of degenerative disease seen in ODP may enhance our understanding, and in time, our management of age-related disorders in the rest of the community.

As this clinic sees ODP and the general community, we were ideally situated to compare these two groups. The availability of the mobile SphygmoCor system from Atcor in Sydney means that a host of central cardiovascular data is available to the clinician in a non-invasive and rapid manner, providing quantitation of important sub-clinical endophenotypes of central vascular stiffness and cardiovascular and therefore, organismal ageing. The central investigative question to be prospectively assessed was whether there were changes in major central cardiovascular parameters in the opioid-dependent group, and if so are they robust to adjustment for other confounding factors. Several earlier papers from our group have considered this issue in cross-sectional^{30 31} and longitudinal^{32 33} studies in each sex separately and drawn conclusions generally confirmatory of this hypothesis. It has been shown that the type of opioid pharmacotherapy affects the severity of opioid-related potentiation of arterial stiffness,¹⁹ that induction of the drug-free state after implantable opioid antagonists reverses this finding²⁰

and that opioid withdrawal is also associated with elevation of cardiovascular age and arterial stiffness parameters.²³ However a formal comparison of the effects by gender has not been possible in these earlier reports as they primarily considered single sex data. Gender comparison therefore forms the major focus of the present report which is a compilation of much of this earlier data.

METHODS

Patient selection

Control subjects (N=576) were recruited opportunistically from patients presenting for health examination checks for insurance or employment medical examinations or from patients presenting with minor health problems such as ear blockages, minor psychological disorders or university students. Patients with known cardiovascular disorders, such as hypertension, renal disease or diabetes or diseases known to perturb the CVS subacutely, such as infections or pregnancy, were excluded. ODP (N=687) were also recruited opportunistically and were under treatment with either methadone (N=71), buprenorphine (N=593) maintenance or naltrexone implant (N=23). All were sampled opportunistically at the time of their clinic visits between May 2006 and December 2012.

Patient treatment

ODP maintained on methadone or buprenorphine were managed by accepted clinical algorithms by their usual health providers for their drug dependency. The naltrexone implants used for management of heroin dependence were manufactured by 'Go Medical' industries in Perth, Western Australia, under Commonwealth of Australia Therapeutic Goods Administration (TGA) Good Manufacturing Practice (GMP) conditions and administered under the compassionate access arrangements of the Special Access Scheme authorised by the TGA as described elsewhere.³⁴ Patients were recalled for retesting at 2 and 5 years postbaseline assessment, and assessed opportunistically. Any patient with a known chronic or subacute cardiovascular condition was excluded from participation. Frequency and quantity of substance use by substance type (inclusive heroin) was assessed at the initial time and subsequently. Other opioids were converted into morphine equivalents, and then into heroin equivalents at the rate of 1 g of street heroin=0.5 g morphine. The duration of opioid use was counted from the time of first use. If it became known that alcohol had been consumed in the few hours prior to the test, or that stimulants had been used in the 3 days prior or that patients were acutely affected by short-acting opioids, that day's studies were excluded.

Pulse Wave Analysis studies

Patients were positioned supine for the performance of the test and allowed to rest for 5 min prior to the test.

Consumption of food, drink, alcohol or tobacco was not restricted, but patients were not allowed either to sleep or talk during the testing procedure. Pulse wave analysis (PWA) by applanation tonometry was performed on the right radial artery unless it was unavailable (due to trauma, surgery or congenital causes). The brachial blood pressure was taken in the opposite arm using the oscillometric Omron HEM 907 device. The data were collected and analysed by the SphygmoCor software. Patients were studied in quintuplicate, and adequate studies were averaged for that day. Acceptable studies had an operator index of greater than 70%, and were not inconclusive. Details of patients' prior drug use was also taken at the time of the study performance and entered into the database. Time in days was measured from the time of the first PWA study.

The SphygmoCor software used for the PWA studies calculates a number of major indices including Vascular Reference Age (RA), Chronological Age (CA), Central Augmentation Pressure at Heart Rate 75 (C_{AP}_HR75), the Central Augmentation Pressure/Pulse Height ratio at Heart Rate 75 (C_{AGPH}_HR75) also known as the Augmentation Index, Central Pulse Height (C_{PH}), Central Augmentation Load (C_{AL}), Central Augmentation Time Index (C_{ATI}), Peripheral-Central Pulse Pressure Amplification Ratio (PPAmpRatio), Maximal Peripheral Rise of dP/dT (P_{MAX}_DPDT), Central Systolic Pressure (C_{SP}), Central Diastolic Pressure (C_{DP}), Central End Systolic Pressure (C_{ESP}), Central Mean Pressure (C_{MEANP}), the Central Diastolic Time Index (C_{DTI}), the Central Tension Time Index (C_{TTI}) and an index of subendocardial perfusion known variously as the Subendocardial Perfusion Ratio (SEVR), the Central Stroke Volume Index (C_{SVI}) or the Buckberg ratio defined as C_{TTI}/C_{DTI}.

Statistics

Data are presented as the mean±SEM. Categorical data were studied using 'EpiInfo' 7.0.8.3 using the χ^2 test obtained from the CDC, Atlanta, Georgia, or the Fisher's exact test if the numbers in a cell were less than 20. Continuous categorised data were analysed in 'Statistica' 7.1 from Statsoft, Oklahoma, using Student's t tests. T tests with separate variances were used where the Levene's test was significant. Continuous variables such as RA, CA, RA/CA, variously corrected RA, SP, weight, high-density lipoprotein (HDL), body mass index (BMI) and systolic pressure were log transformed in accordance with normality assumptions based on the Shapiro-Wilks test. High-sensitivity CRP and the heroin dose were arcsinh transformed which is a similar transform to logarithmic, but accepts arguments of zero. Time (as days) was measured from the time of the initial PWA study. Time since last cigarette was recorded and analysed as a factor with cut-off points at 30, 60, 120, 180 and >180 min and a non-smoking category. For some analyses, lifetime heroin exposure was cut into quartile

categories with divisions at 0, 0.01, 2.49, 6.59 and 350 g-years, respectively, yielding 583, 207, 226 and 227 patients in each group, respectively. Multiple regression was performed in 'R' 2.15.2 obtained from the University of Melbourne Central 'R' Archive Network mirror. Mean model estimates for various groups were prepared by inserting the mean parameter values into the untransformed final models. Multiple linear regression of truncated variables such as RA (minimum value of 20, maximum value of >80) was analysed using Tobit multiple regression techniques from the Applied Econometrics library in 'R' (AER). RAs of individual studies returned as >80 were assigned as 88. Time-dependent repeated measures analysis was performed using non-linear mixed effects (nlme) regression module in 'R' using restricted equation maximum likelihood techniques. Random effects were assigned to unity and the patient identification code. When nlme models were compared they were converted to maximum likelihood methods to allow ANOVA testing. In each case, model reduction was performed manually by the classical method involving removing the least significant term. The log-likelihood value was abbreviated to LogLik. Graphs were prepared with reshape2 and ggplot2. Where LOESS curves were fitted, the span used was 0.95. T tests were two-sided. $p < 0.05$ was considered significant.

Ethical approval

All patients provided their informed consent to participate in the study and for their medical treatment. The study was approved by the Human Research Committee of the Southcity Family Medical Centre, Brisbane, Queensland, Australia, which is registered with the National Health and Medical Research Council.

RESULTS

A total of 576 control patients were compared with 687 ODP. The mean ages were 30.0 ± 0.5 and 34.5 ± 0.3 (mean \pm SEM) years ($t = -8.262$, $df = 1082.22$, $p < 0.0001$, see online supplementary table S1), with 401 (69.62%) and 465 (67.69%) men, respectively ($\chi^2 = 0.54$, $p = 0.46$). In total, 15.97% and 92.29% of the control and ODP men smoked tobacco, respectively. ($\chi^2 = 746.56$, $p < 0.0001$). The mean CA of the whole group was 32.5 ± 0.3 years. The mean CA of men was 32.1 ± 0.3 and of women 33.2 ± 0.5 years. In total, 7.47% and 5.97% of the control and opioid-dependent groups were aged over 50 years, respectively ($\chi^2 = 1.13$, $p = 0.29$). Among the men these ratios were 5.74% and 6.24% ($\chi^2 = 0.1$), and among the women they were 11.43% and 5.41% for the control and opioid-dependent groups, respectively ($\chi^2 = 4.79$, $p = 0.029$, Fisher's exact test 0.19–0.98; pooled data, Corr. $\chi^2 = 3.8$, $p = 0.051$). Racial stratification was not performed as around 90% of our population is of Caucasian background. Other baseline biometric, drug use and laboratory values are given in online supplementary table S1.

Patients in the control group and ODP were studied longitudinally on 710 and 1305 occasions, respectively. The period of repeat study, measured from the time of the first PWA study, was 624.11 ± 18.74 days (range 1–2382 days; 495 (60.36%) studies performed beyond 360 days). Details of the numbers of repeat studies are given in online supplementary table S3.

Comparative PWA values are given in online supplementary table S3. Most augmentation values and the C_SP and C_ESP are noted to be higher in the opioid-dependent group consistent with their being an average 4.59 years older.

Figure 1 shows different vascular age and augmentation parameters corrected for various features against CA. This figure shows that BMI was lower in the opioid-dependent group than in the controls as a factor (factor est.=0.0719, est. SE=0.0327, $t = 2.197$, $p = 0.0282$) and in interaction with CA (BMI: CA est.=−0.0023, est. SE=0.0009, $t = -2.350$, $p = 0.0189$; model $F = 34.94$, $df = 3, 1258$, $p < 0.0001$). In the longitudinal series BMI was lower as a factor (est.=−0.0174, $df = 812$, $p = 0.0470$; model Akaike Information Criteria (AIC)=−3722.55, LogLik=1867.27). This result may be the effect of cumulative diversion of resources over time. Figure 2 shows similar indices over time. Online supplementary table S3 presents the results of the cross-sectional data where BMI corrected RA is regressed against CA and addictive status. In the whole group opioid-dependency status ($p = 0.0265$) and the CA:addiction interaction ($p = 0.0205$) are significant. Similar results were found in each sex. Similar results were also found in the longitudinal study when the RA/CA ratio was regressed against CA, time and dependency status for opioid dependency as a factor ($p = 0.0102$) and in interaction with CA ($p = 0.0028$; details in online supplementary table S4).

Inclusion of tobacco exposure along with opioid exposure in these models did not alter these findings (data not shown).

As shown in supplementary figures S1 and S2, these changes were found to be more pronounced with CA in females (sex as a factor $p = 0.0036$; sex: CA interaction $p = 0.0040$, supplementary table 5). These data are presented corrected for the changes in BMI in figures 3 and 4. Details for the significant differences in the cross-sectional dataset are presented in table 1. For the longitudinal dataset the data are given in supplementary table S6.

Figure 5 shows these data by sex with LOESS curves fitted (span=0.95). This strongly suggests that an inflection point is reached at about the age of 30 in women, which is not seen in men until about they are 40 years of age. This was quantified by dichotomising CA from age 41 in men and 29 in women. As shown in table 2, in men, in the older age category, the addictive status and their interaction was significant ($p = 0.0010$, 0.0021 and 0.0008 respectively), while in women the older age: addiction interaction was significant ($p = 0.0195$, analysis restricted to women <55 years).

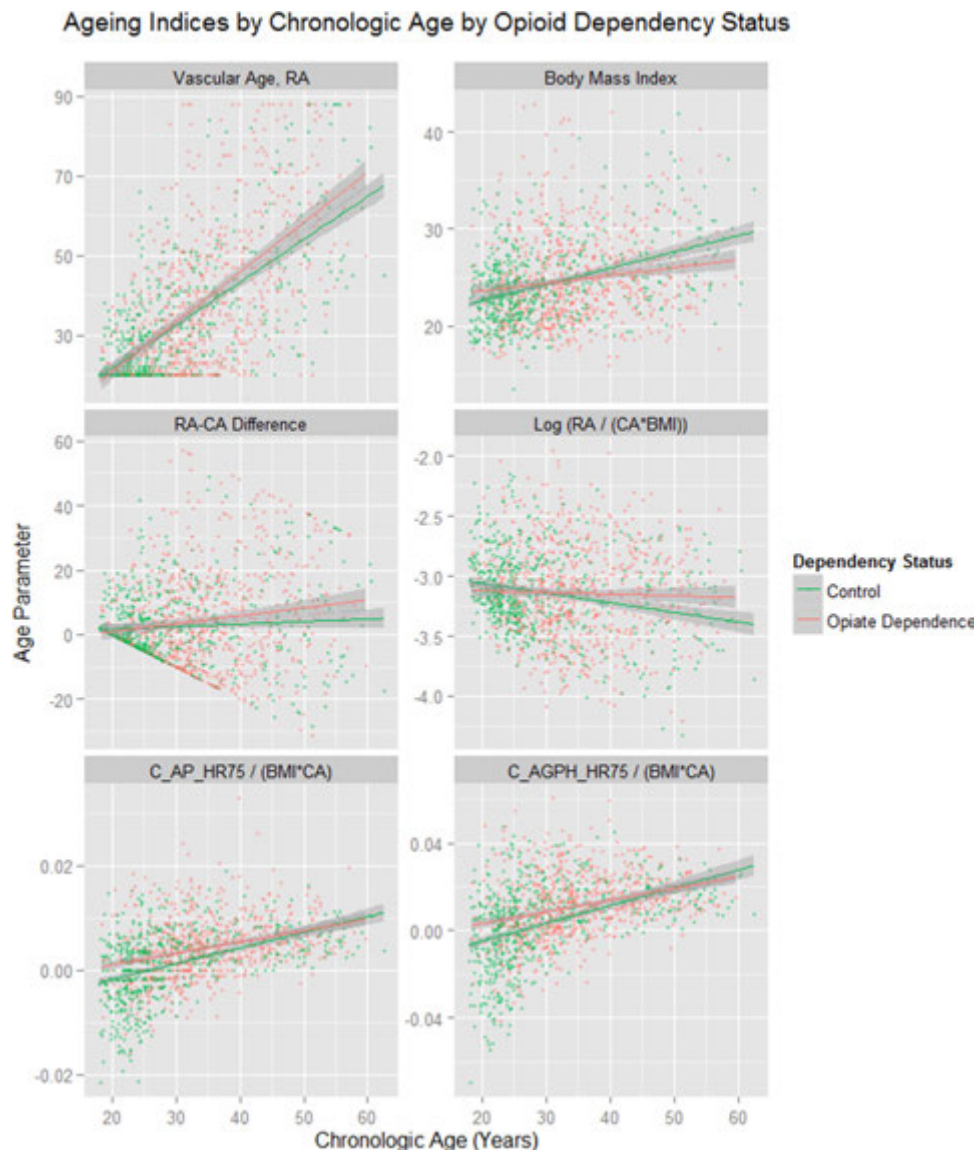


Figure 1 Ageing and stiffness indices by chronological age by opioid dependency status. RA, Vascular Reference Age; CA, Chronological Age; C_AP_HR75, Central Augmentation Pressure at Heart Rate 75 bpm; C_AGPH_HR75, Central Augmentation Pressure/Pulse Height Ratio at Heart Rate 75 bpm.

The regression changes are quantified for some of the major indices of arterial stiffness in cross-sectional data in online supplementary table S6 (all $p < 0.05$). Similar significantly different sex-specific data were found in the longitudinal dataset when the RA was regressed against CA, time, sex and addictive status (most $p < 0.02$, see online supplementary table S7).

When the mean sex-specific values for CA and BMI are inserted into the equation of table 3, the mean vascular ages of the control groups among all patients, men and women were 35.42, 35.61 and 34.45 years, while the corresponding ages of the ODPs were 37.24, 36.31 and 39.18 years, representing incremental gains of 5.14%, 1.97% and 13.43%, respectively.

When quartiles are defined for lifetime heroin exposure the results shown in figure 6 are found. Similar effects longitudinally are shown in online supplementary figure 3. These results are quantitated in online

supplementary table S8 for cross-sectional and longitudinal data compared to non-exposed controls. In the cross-sectional analysis the RA/CA ratio was regressed against the CA and Opioid exposure quartile. In the longitudinal analysis the RA/CA ratio was regressed against time, CA and the opioid exposure quartile. While the CA:level 3 opioid exposure interaction is of borderline significance in all patients and women ($p = 0.0546$ and 0.0568 , but not in men) in the longitudinal study, the age:level 2 exposure is significant in all patients and men ($p = 0.0003$ and 0.0110) and level 3 opioid exposure approaches significance in women as a factor and in interaction with age ($p = 0.0501$ and 0.0547). Online supplementary table S9 presents the results of a longitudinal regression of age-corrected indices of cardiovascular stiffness against time and opioid exposure quartile by gender, and notes a highly significant effect by exposure quartile in both genders.

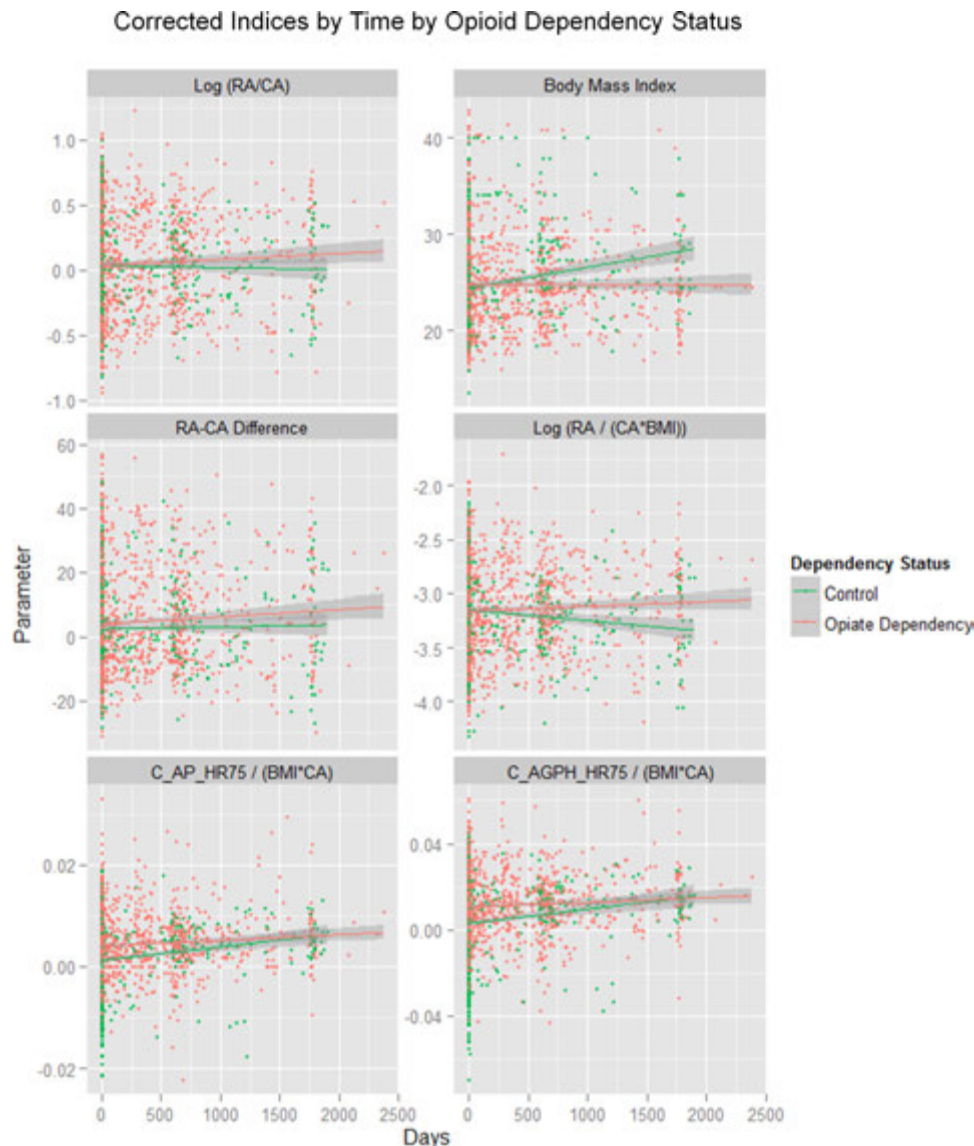


Figure 2 Corrected ageing and stiffness indices by time by opioid dependency status. RA, Vascular Reference Age; CA, Chronological Age; C_AP_HR75, Central Augmentation Pressure at Heart Rate 75 bpm; C_AGPH_HR75, Central Augmentation Pressure/Pulse Height Ratio at Heart Rate 75 bpm.

The data were formally interrogated for a trend between the different quartiles of lifetime opioid exposure using the contrasts polynomial function in 'R'. Significant contrasts between the various quartiles for lifetime opioid exposure for the age:opioid exposure interaction was indeed demonstrated in all patients (est.=0.1657, SE=0.0787, t=2.104, p=0.0356; Model Adj. R^2 =0.4265, F=133.0, df=7, 1235, p=0.0001 such that moving up a quartile level at age 60 increased the modelled RA by 8.42% to 65.051 years, and movement from the first (non-exposed) quartile to the highest (level 3) quartile increased the modelled RA 25.26% to 75.154 years.

Some environmental exposure–pathology relationships have been shown to be power functions of the duration of exposure and are therefore particularly sensitive to the periods for which exposure occurs.³⁵ Since opioid administration is often prescribed and recommended as being

of indefinite duration, this is particularly relevant to the present discussion. Therefore, a detailed study of the power relationships of the duration of opioid administration was undertaken. Table 3 shows that simple regression models of RA/CA against the dose–duration interaction were significantly related to linear, quadratic, cubic and quartic terms in opioid exposure duration. Moreover, when RA/CA was regressed against a model including interactive terms in linear, quadratic, cubic and quartic terms, all four were significant. When these models were compared by ANOVA studies, the quadratic model (AIC=82.888) was noted to be significantly better than the linear, cubic or quartic models (ANOVA tests, all p<0.05), but not significantly different from the combined model (AIC=83.731, p=0.87; online supplementary table S10).

When a similar exercise was performed in the longitudinal dataset, similar results were obtained (see online

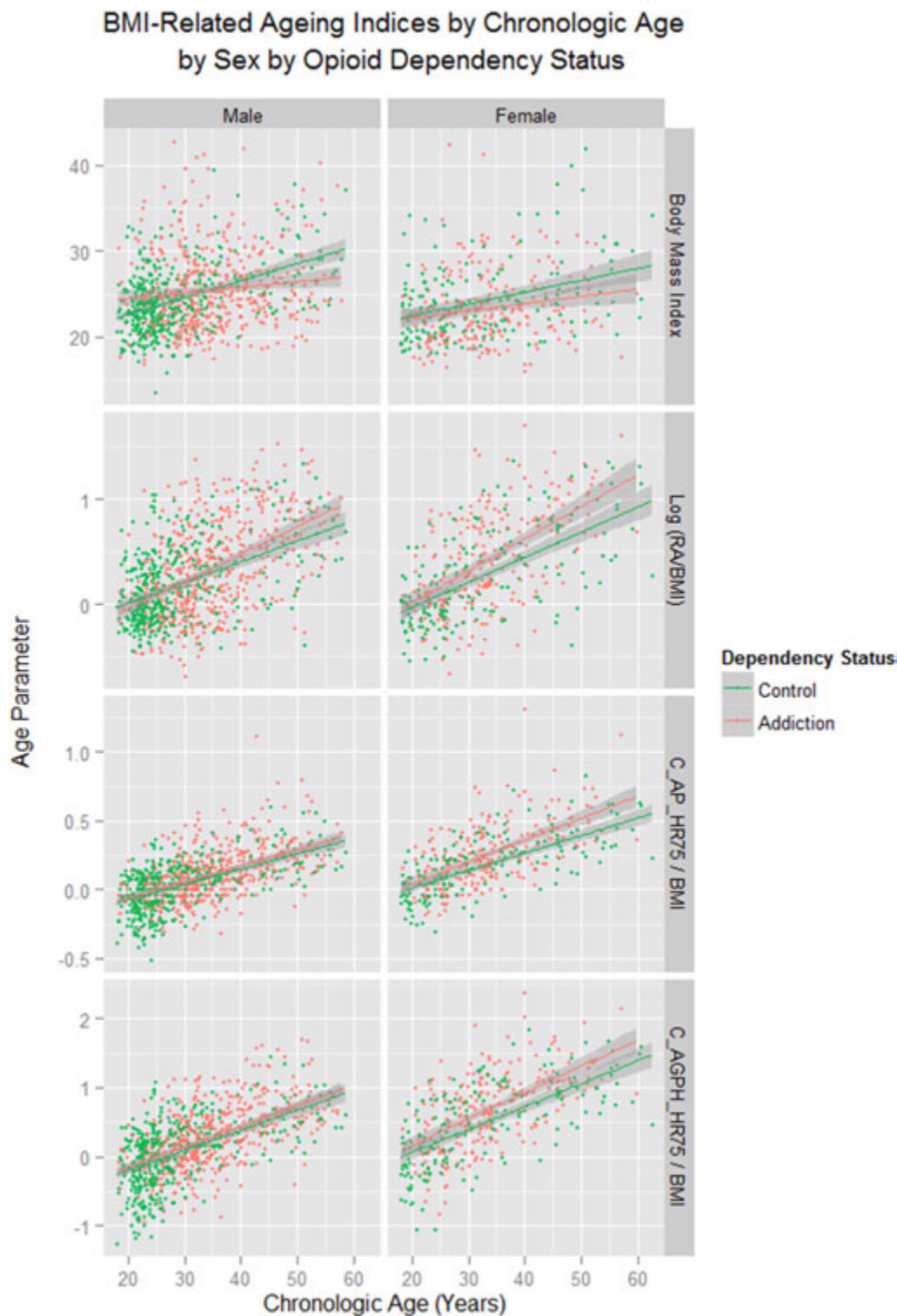


Figure 3 Body mass index-related ageing indices by chronological age by addictive status by sex. RA, Vascular Reference Age; CA, Chronological Age; C_{AP}_HR75, Central Augmentation Pressure at Heart Rate 75 bpm; C_{AGPH}_HR75, Central Augmentation Pressure/Pulse Height Ratio at Heart Rate 75 bpm.

supplementary table S11). In this study RA/CA was regressed against time and the opioid exposure quartile. As a combined linear-quadratic-cubic-quartic model failed to converge, the highest order model used was linear-quadratic-quartic. Again, quadratic and quartic terms in exposure duration persist in the final model. In this case the

quadratic model (AIC=1040.85) was significantly superior to all the others but was not significantly better than the linear-quadratic-quartic model (AIC=1041.09, $p=0.082$; see online supplementary table S12).

The data were interrogated for the presence of a dose-response relationship directly by examining continuous

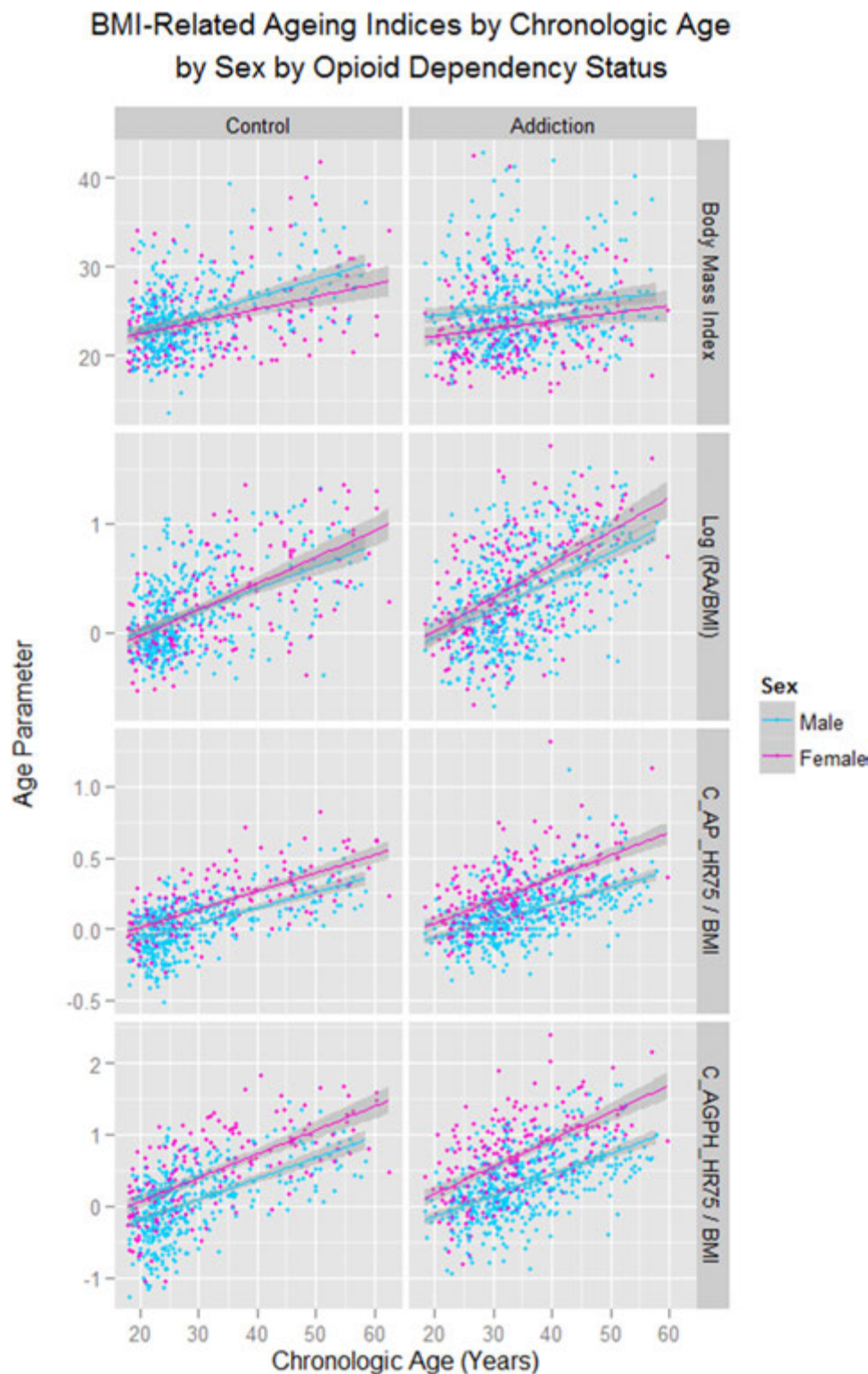


Figure 4 Body mass index-related ageing indices by chronological age by sex by addictive status. RA, Vascular Reference Age; CA, Chronological Age; C_{AP}_HR75, Central Augmentation Pressure at Heart Rate 75 bpm; C_{AGPH}_HR75, Central Augmentation Pressure/Pulse Height Ratio at Heart Rate 75 bpm.

terms in opioid dose and duration regressed against the RA/CA ratio in both datasets. As shown in [table 4](#) the dose–duration interaction is significant in all patients considered together, in men and in women ($p < 0.0001$, 0.0003 and 0.0236, respectively) in the cross-sectional

dataset, while in the longitudinal dataset the parallel results are $p = 0.0004$, 0.0008 and 0.0127, respectively.

The final step of the analysis was to consider whether the significance of the opioid dose and duration might persist after adjustment for all known cardiovascular risk

Table 1 Effects of gender on key measures of arterial stiffness—cross-sectional dataset

Dependent variable	Group	Parameter	Adj. R ²	F	df	Model P	Estimate	Upper limit	Lower limit	p Value
RA-CA difference	Opioid	Chron.Age:Female.Sex	0.0189	7.596	2, 684	0.0005	0.6324	1.3123	-0.0475	0.0688
BMI	Control	Chron.Age:Female.Sex	0.1523	52.58	2, 572	<0.0001	-0.0092	-0.0014	-0.0170	0.0213
BMI	Opioid	Female.Sex	0.0713	27.35	2, 684	<0.0001	-0.0827	-0.0555	-0.1099	<0.0001
RA/BMI	Opioid	Chron.Age:Female.Sex	0.2617	122.6	2, 684	<0.0001	0.0361	0.0539	0.0183	<0.0001
C_AP_HR75/BMI	Control	Chron.Age:Female.Sex	0.4882	274.3	2, 571	<0.0001	0.0312	0.0390	0.0234	<0.0001
C_AP_HR75/BMI	Control	Chron.Age:Female.Sex	0.4882	274.3	2, 571	<0.0001	0.0312	0.0390	0.0234	<0.0001
C_AP_HR75/BMI	Opioid	Chron.Age:Female.Sex	0.3712	203.4	2, 684	<0.0001	0.0467	0.0543	0.0391	<0.0001
C_AGPH_HR75/BMI	Control	Chron.Age:Female.Sex	0.4603	245.4	2, 571	<0.0001	0.0924	0.1144	0.0704	<0.0001
C_AGPH_HR75/BMI	Opioid	Chron.Age:Female.Sex	0.3980	227.8	2, 684	<0.0001	0.1265	0.1451	0.1079	<0.0001
C_AP_HR75/(CA*BMI)	Control	Female.Sex	0.2809	112.9	2, 571	<0.0001	0.0033	0.0043	0.0023	<0.0001
C_AP_HR75/(CA*BMI)	Opioid	Female.Sex	0.2489	114.7	2, 684	<0.0001	0.0047	0.0055	0.0039	<0.0001
C_AGPH_HR75/(CA*BMI)	Control	Female.Sex	0.2567	99.96	2, 571	<0.0001	0.0096	0.0125	0.0067	<0.0001
C_AGPH_HR75/(CA*BMI)	Opioid	Female.Sex	0.2604	121.8	2, 684	<0.0001	0.0130	0.0152	0.0108	<0.0001

factors. In preliminary analyses lipidic factors were invariably eliminated during the model reduction process. Moreover, as discussed in the Introduction, opioids themselves are likely to perturb lipid function, and also have a robust immunostimulatory action. Therefore, including immune markers is likely to over-correct the model. Similarly, when time since last cigarette consumption was included in the cross-sectional and longitudinal models it was eliminated during model reduction. For these reasons the final cross-sectional formula used regressed RA/CA against interactive terms in opioid dose and duration, height, tobacco consumption, systolic blood pressure and weight. The longitudinal model was similar but had an additive term in weight. These were the terms that remained significant in the models in preliminary exploratory analyses for log (RA). Further consideration of the clinical justification for the choice of this five-way interaction is included in the Discussion section.

The results shown in [table 5](#) were found for the cross-sectional data. This table shows that significant interactions including opioid dose–duration terms are found in all patients ($p=0.0261$) and in men ($p=0.0017$; Adj. $R^2=0.0815$), while in women this interaction approaches significance ($p=0.0516$). When a similar exercise is performed on the longitudinal data, significant interactions are seen from $p=0.0011$, 0.0013 and 0.0073 and above in each group, respectively ([table 6](#)).

Online supplementary table S13 presents the results of final models in which complete multiple regression was performed in the cross-sectional dataset for all pertinent variables. (Log) RA/CA was regressed against interactive terms in opioid dose and duration, height, tobacco use, systolic pressure and high sensitivity CRP together with additive terms in weight, cholesterol and HDL. Opioid dose and duration persist in the final model in men and in all patients, but not in women. Interestingly CRP features in most of the terms of these final models.

These overall results were broadly confirmed by the running of further analyses including by the use of additivity and variance stabilisation in R.³⁶ In particular, we analysed a range of models including different polynomial terms in known predictors, and matching models augmenting the known risk factors of heroin use. Models with and without heroin use were compared. These analyses confirmed that the model fit for the relationship between log (RA/CA) and the predictive variables was significantly improved by the inclusion of terms for opiate exposure (dose and duration) among the male opiate dependents, in the opioid-dependent groups in both sexes and in all patients; that the relationship between the various model parameters was (unsurprisingly) unlikely to be of a strictly linear form and that superior model fits for log (RA/CA) were likely to be accompanied by various higher order interactions between the most powerful predictive independent variables, namely, (log) SP, weight, height, tobacco consumption and opioid exposure dose and duration.

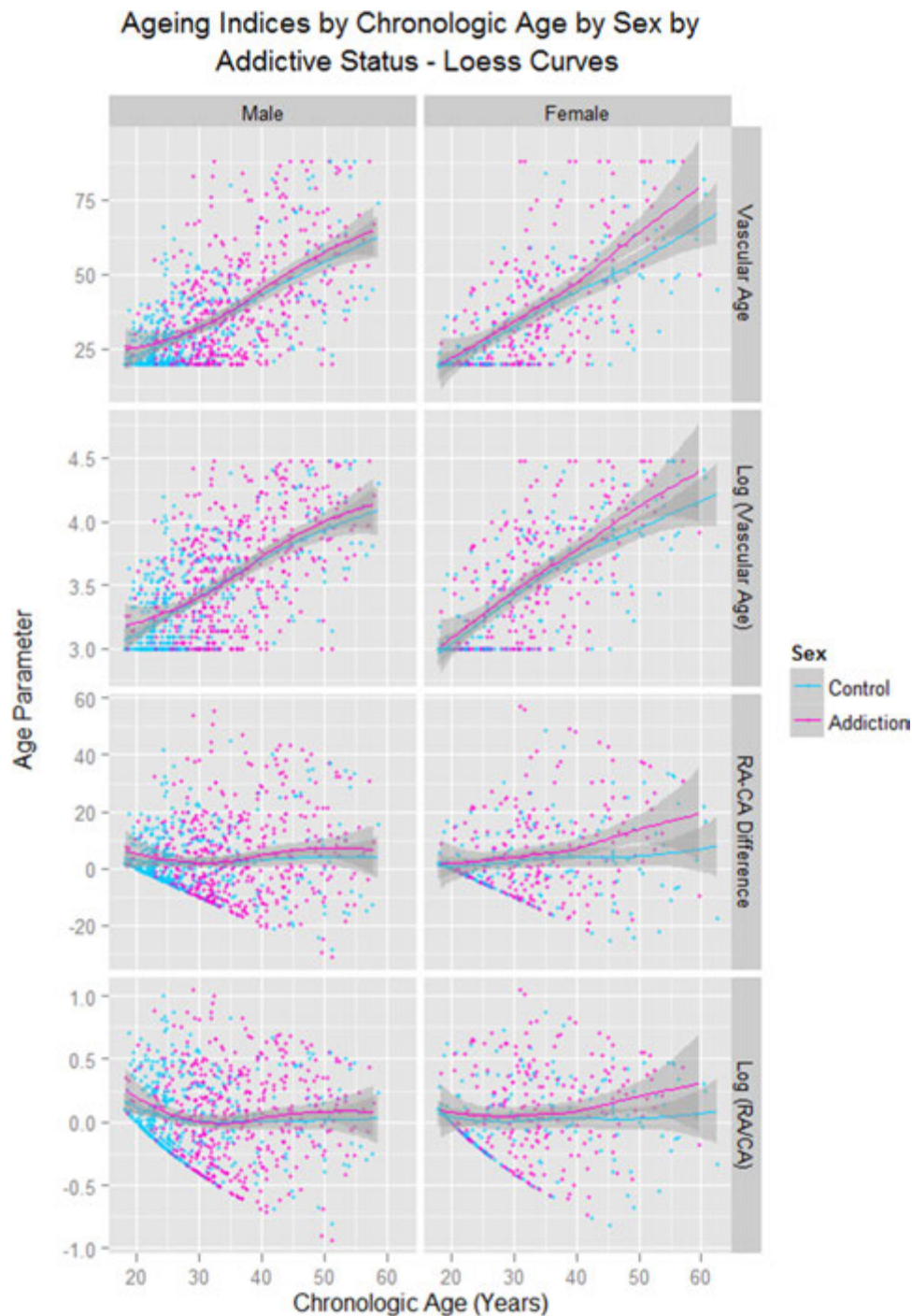


Figure 5 Ageing indices by chronological age by sex by addictive status—LOESS curves. RA, Vascular Reference Age; CA, Chronological Age.

DISCUSSION

The major findings of this study are that indices of vascular age and arterial stiffness are worse in opioid-dependent patients compared with opioid naïve controls with mean calculated ages elevated by 1.97% in men and 13.43% in women. The effect was thus more marked in women. A significant effect was found on vascular age and augmentation index by exposure quartile after correction for CA and BMI. The RA/CA ratio was found to be related to power functions of the opioid

duration of exposure in cross-sectional and longitudinal analyses. A dose-response relationship was demonstrated with lifetime opioid exposure. In particular, the effect of opioid exposure was robust, and remained after multiple adjustments in cross-sectional and longitudinal studies.

These findings should be interpreted in the light of the relatively modest degree of opioid exposure to which these patients were exposed. While the dose and duration of opioids used by patients in this study is typical of that seen in many published series, the treatment of

Table 2 Age: addictive status relationships with CA discretised, about 41 years in men and 29 years in women with women <55 years of age

Parameter	Variable statistics				Model summaries		
	Estimate	Upper limit	Lower limit	p Value	F	df	p Value
Males							
Older age	-0.1837	-0.0745	-0.2929	0.0010	5.492	3, 862	0.0010
Opioids	-0.0846	-0.0307	-0.1385	0.0021			
Older age:Opioids	0.2310	0.3657	0.0963	0.0008			
Females							
Older age:Opioids	0.1248	0.2291	0.0205	0.0195	2.169	3, 378	0.0912

these patients was mostly with the relatively mild partial agonist buprenorphine, with only modest doses employed (mean 6.98 ± 0.21 mg): this dose level being much lower than the commonly recommended (18–24 mg).³⁷ Moreover, buprenorphine has been shown to be more mild in its cardiovascular effects than the full agonist agent methadone. For this reason the results reported here should be seen as a lower bound on the effects which may be observed.

The findings in relation to central vascular stiffness and age being related to power functions of the treatment duration are of great importance. Chronic opioid agonist treatment is often seen as relatively benign, and partly for this reason, is frequently recommended for very long term or indefinite administration.^{38 39} However, the demonstration here that the effects likely compound with time has major clinical practice implications, and has not been previously noted. The 1.97%

effect described here for men, compounded over 30 years equates cumulatively to 179.5% gain and in diminution to 44.95% loss. Similarly the 13.43% gain seen in women compounded over 30 years is a 4349.02% gain and a 98.66% loss in reduction. The effects, therefore, of these processes maintained over the long term on stem cell diminution or immune stimulation are potentially very considerable.

The exacerbation of the effect in women was clearly demonstrated in [figures 3–5](#), [tables 1 and 2](#), online supplementary tables 4 and 5 and online supplementary figures 1 and 2. This finding has, to the authors' knowledge, only been reported previously by an Iranian group.¹⁴ If one looks closely at [figure 5](#), several fascinating findings emerge. The vascular age algorithm used by the SphygmoCor software is based on the augmentation index C_{AGPH}HR75. This index has a clear curvilinear convex upward relationship with CA as shown in [figure 5](#)

Table 3 Cross-sectional models polynomial in heroin duration

Model/parameter	Parameter				Model		
	Value	Upper limit	Lower limit	p Value	F	df	p Value
<i>1 Order—Linear</i>							
H.Dura.n	-0.0059	-0.0018	-0.0100	0.0056	8.628	2, 664	0.0002
H.Dose: H.Dura.n	0.0091	0.0134	0.0048	3.7.E-05			
<i>2 Order—Quadratic</i>							
H.Dura.n	-0.0171	-0.0063	-0.0279	0.0018	7.443	3, 663	<0.0001
H.Dura.n ²	0.0004	0.0008	0.0000	0.0261			
H.Dose: H.Dura.n	0.0084	0.0127	0.0041	0.0002			
<i>3 Order—Cubic</i>							
H.Dura.n	-0.0116	-0.0047	-0.0185	0.0012	7.102	3, 663	0.0001
H.Dura.n ³	6.3E-06	0.0000	0.0000	0.0466			
H.Dose: H.Dura.n	0.0084	0.0127	0.0041	0.0001			
<i>4 Order—Quartic</i>							
H.Dura.n	-0.0059	-0.0018	-0.0100	0.0056	8.628	2, 664	0.0002
H.Dose: H.Dura.n	0.0091	0.0134	0.0048	3.7.E-05			
<i>1, 2, 3 & 4 Order</i>							
H.Dose: H.Dura.n ³	6.5E-05	1.0E-04	2.6E-05	0.0012	3.353	7, 659	0.0016
H.Dura.n ² : H.Dura.n ³	-1.0E-06	-3.9E-07	-1.6E-06	0.0007			
H.Dura.n ² : H.Dura.n ⁴	9.2E-08	1.5E-07	3.5E-08	0.0014			
H.Dura.n ³ : H.Dura.n ⁴	-2.7E-09	-9.8E-10	-4.4E-09	0.0026			
H.Dose: H.Dura.n ² : H.Dura.n ⁴	-4.5E-09	-9.7E-10	-8.0E-09	0.0145			
H.Dura.n: H.Dura.n ³ : H.Dura.n ⁴	2.5E-11	4.3E-11	7.4E-12	0.0048			
H.Dose: H.Dura.n: H.Dura.n ³ : H.Dura.n ⁴	2.6E-12	5.0E-12	2.5E-13	0.0312			

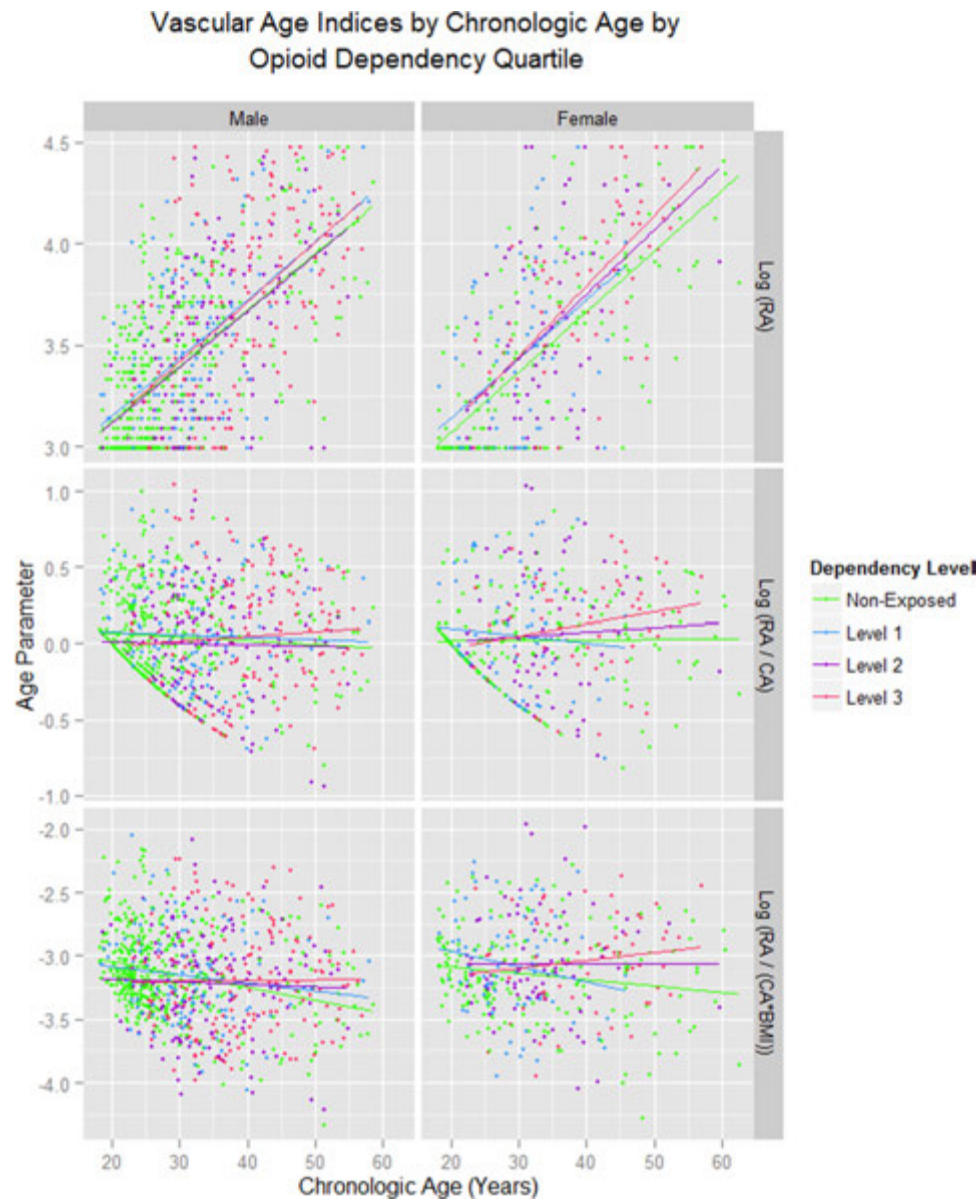


Figure 6 Vascular age indices by chronological age by opioid dependency quartile. RA, Vascular Reference Age; CA, Chronological Age. Opioid exposure quartiles as defined in the Methods section.

in the lower panels, unlike the C_{AP}HR75 which is directly linear.⁴⁰ Hence the reduction at higher ages on the C_{AGPH}HR75 curve may be somewhat artefactual. If one looks at the upper panels of figure 5 the rise in RA with age in ODP may be seen to be broadly exponential in form, if the decline in slope above the age of 45 years is discounted. In women it appears that the rise in RA occurs some 10 years prior to that seen in men, a finding emphasised by the middle panels. This fits with a dramatic clinical transformation which is seen in opioid-dependent women at around the age of 30, and in men at around the age of 40. While the cause of this is unknown it may possibly be related to a more aggressive immune system in women which is in part hormonally mediated.⁴¹ In this context the demonstration that oestradiol directly stimulates telomerase was particularly provocative.⁴²

Some consideration of the comparability of the control and opioid-dependent groups is appropriate. Significant differences were found between the control and opioid-dependent groups in relation to CA, weight, BMI, smoking, cholesterol, low-density lipoprotein (LDL) and hepatic and inflammatory laboratory markers, but these were controlled for by various multiple regression techniques. The higher mean weight in the opioid-dependent group may have been related in part to their higher age, and in part to the orexigenic effects of opioid agonism⁴³ while serial resource diversion may explain the slower rate of gain of weight in this group over time. Higher rates of tobacco consumption may be related to either the common features of the addictive lifestyle or the proconsumptive effects of opioid analogues.⁴⁴ Significantly more of the women in the control group (11.4% vs 5.41%) were aged over

Table 4 Dose–response relationships

Parameters	Variable statistics				Model summaries		
	Estimate	Upper limit	Lower limit	Pr(> t)	F	df	p Value
Cross-sectional studies							
<i>Both Sexes</i>							
H.Dura.n	−0.0059	−0.0018	−0.0100	0.0056	8.628	2, 664	0.0002
H.Dose: H.Dura.n	0.0091	0.0134	0.0048	0.0000			
<i>Males</i>							
H.Dura.n	−0.0089	−0.0034	−0.0144	0.0018	7.105	2, 441	0.0009
H.Dose: H.Dura.n	0.0124	0.0191	0.0057	0.0003			
<i>Females</i>							
H.Dose: H.Dura.n	0.0052	0.0097	0.0007	0.0236	5.201	1, 210	0.0236
Group	Variable statistics				Model		
Parameter	Value	Upper limit	Lower limit	t-value	p Value	AIC*	LogLik*
Longitudinal studies							
<i>Both sexes (df=814)</i>							
H.Dose:H.Dura.n	0.0045	0.0070	0.0020	3.5512	0.0004	1068.74	−530.37
<i>Males (df=552)</i>							
H.Dura.n	−0.0036	−0.0005	−0.0067	−2.2069	0.0277	753.15	−371.58
H.Dose:H.Dura.n	0.0075	0.0118	0.0032	3.3754	0.0008		
<i>Females (df=260)</i>							
H.Dose:H.Dura.n	0.0052	0.0093	0.0011	2.5091	0.0127	347.43	−169.72

50 years ($p=0.029$). However as no data were collected relating to hormonal status with regard to the menopause, it is not possible to remark on the relative hormonal status of the two groups. Opioid dependency is well known to be associated with hypothalamic hypogonadotrophic oligoamenorrhoea, so that age-related hormonal suppression in the control group was somewhat balanced by drug-related hormonal suppression in the opioid-dependent group. Clarification of this issue must await further studies.

Some consideration of the clinical justification for the five-way interaction is appropriate which was presented in the final multiple regression models of RA (tables 5 and 6). Height is a key variable that relates to many techniques of measuring of arterial stiffness since it is related to the timing of arterial wave reflections, and it is hardly surprising that this remains in the final model.^{45 46} Height and weight will naturally interact and indeed the BMI is one formula which formalises such interactions. The opioid dose–duration exposure is a standard way in which to account for lifetime opioid exposure, and has been used by WHO³⁵ and NIH¹⁴ investigators among others. Other factors including laboratory parameters were not present in the final models. Therefore, it is not surprising that this cluster of factors remains in the final model.

On the other hand, CRP was prominent and present in most terms in the final model when RA/CA was interrogated by multiple regression (see online supplementary table S13) suggesting that innate immune processes may be implicated in the observed opioid-vasculopathy effect. The age-related course of high-sensitivity CRP has been described in several earlier reports in our patient

cohort.^{6 28 47} Online supplementary table S1 shows significant elevation of CRP, erythrocyte sedimentation rate, serum globulins and circulating lymphocytes and monocyte numbers in the opioid-dependent group. Consideration of the very flat age-dependent trajectories of these parameters in controls in our earlier reports shows that this effect is much greater in opioid dependence than might be expected on the basis of the higher CA in the opioid-dependent group alone. This is in turn consistent with the important chronic inflammatory basis of many vascular diseases^{48–50} and the immune theory of organismal ageing.^{48 51}

As noted above, vascular age is frequently said to be a surrogate for organismal ageing. The present data are consistent with that view, and also with the literature cited of accelerated ageing in these patients. The present technique provides a mechanism to quantify these changes at the whole human level. Interestingly, while it is well known that telomere length can function as a ‘mitotic clock’ of the biological ageing process, it has been shown that oxidative stress can stochastically increase this rate, in part by inducing single-strand telomeric breaks related to the high guanosine content of telomeric repeats (TTAGGG)n.^{52–54} The heightened inflammatory activity associated with opioid dependence has been previously noted,^{5–7 28 55} and the involvement of this pathway mechanistically unifies the inflammatory, oxidative, chromosomal, telomeric and stem cell hypotheses of ageing, and accounts for the uniformity of the progeroid findings across organ systems⁵⁶ and the high prevalence of multi-system disease seen in opioid dependence.^{11 12 28}

As no structural imaging techniques were performed, it is not possible to say with certainty if the observed

Table 5 Cross-sectional adjusted regression models

Group	Variable statistics				Model		
	Estimate	Upper limit	Lower limit	Pr(> t)	F	df	p Value
<i>Both sexes</i>							
H.Dura.n: Cigs.d: SP : Weight	0.00023	0.0003	0.0001	0.0001	7.561	9, 657	<0.0001
H.Dura.n: Height: Cigs.d: SP	0.00030	0.0005	0.0001	0.0047			
H.Dura.n: Height: Cigs.d	-0.00143	-0.0004	-0.0024	0.0048			
H.Dura.n: Height: Cigs.d: SP : Weight	-0.00007	0.0000	-0.0001	0.0051			
H.Dura.n: Height: Cigs.d: Weight	0.00032	0.0006	0.0001	0.0063			
H.Dose: H.Dura.n: Height: Cigs.d: Weight	-0.00037	-0.0001	-0.0007	0.0261			
H.Dose: H.Dura.n: Height: Cigs.d: SP :	0.00008	0.0001	0.0000	0.0262			
Weight							
H.Dose: H.Dura.n: Height: Cigs.d	0.00155	0.0029	0.0002	0.0286			
H.Dose: H.Dura.n: Height: Cigs.d: SP	-0.00032	0.0000	-0.0006	0.0290			
<i>Males</i>							
H.Dura.n: Weight	-0.0024	-0.0010	-0.0038	0.0007	5.485	10, 438	<0.0001
H.Dose: H.Dura.n: Weight	0.0032	0.0052	0.0012	0.0017			
H.Dose: Cigs.d: SP : Weight	-4.4770	-1.0529	-7.9011	0.0107			
H.Dose: Height: Cigs.d: SP : Weight	0.0253	0.0447	0.0059	0.0109			
H.Dose: Cigs.d: SP	19.460	34.3874	4.5326	0.0109			
H.Dose: Cigs.d: Weight	21.370	37.8144	4.9256	0.0112			
H.Dose: Height: Cigs.d: Weight	-0.1209	-0.0276	-0.2142	0.0114			
H.Dose: Height: Cigs.d: SP	-0.1098	-0.0251	-0.1945	0.0114			
H.Dose: Cigs.d	-92.680	-21.100	-164.25	0.0115			
H.Dose: Height: Cigs.d	0.5230	0.9293	0.1167	0.0120			
<i>Females</i>							
Height: Cigs.d: Weight	-0.00041	-0.0002	-0.0006	0.00002	8.25	3, 214	<0.0001
Height: Cigs.d: SP : Weight	0.00008	0.0001	0.0000	0.00003			
H.Dose: H.Dura.n: Height: Cigs.d	2.2E-06	0.0000	0.0000	0.05160			

elevations in vascular stiffness were associated with fixed atherosclerotic lesions. However a large and weighty literature confirms the relevance of significance of elevations in vascular stiffness.^{45 46 57-59} Structural correlation must await further work.

The consistency of the present results with the previously reported data from various national and international groups^{11-18 60} is clear in that we have confirmed the exacerbation of cardiovascular ageing and arterial stiffness in opioid dependency. However these earlier results have been extended by demonstrating a measurable major subclinical endophenotype of accelerated ageing antemortem, confirming dose-response relationships, demonstrating for the first time the significance of the improved quadratic model in opioid exposure duration and showing that the opioid-related effect is robust to adjustment for known cardiovascular risk factors in both sexes. Moreover, we confirmed that the effect is worse in women¹⁴ and extended this result by showing that the differential effect starts in women over a decade earlier than in men (29 vs 41 years). In that the PWA technique directly relates increased arterial stiffness to cardiovascular and therefore, organismal ageing, the present detailed studies link advanced cardiovascular age to many other indices of accelerated ageing in opioid dependency as

have been shown by this^{6 7 10 26 28 47 61-65} and other⁶⁶ groups. As such the present report is a meaningful and important extension of earlier reports from this project on the cardiovascular implications of opioid dependency,³⁰⁻³³ its treatment¹⁹ and withdrawal²³ and the antagonist-induced reversal of these effects.²⁰ Hence the phenomenology of the present descriptive report is consistent with, and extends, extant reports in the published literature.

While this study is not designed to be mechanistic in nature, some brief comment on this issue may be appropriate, in part for its relevance to the consideration of possibly aetiologically causal pathways. Some of the most interesting questions to emerge from the present work relate to the possible mechanisms underlying the plethora of changes which have been identified in opioid dependence as cardiovascular risk factors, as potentially atherogenic processes and as accelerants of ageing processes. Opioids have been linked with blockade of the cell cycle at cyclin dependent kinases 2, 4 and 6 by P16^{INK4A} and P21^{WAF1/CIP1}.^{67 68} P16 is the gene product of CDKN2A located at the senescence locus on chromosome 9p21.3 which is a hotspot for many Genome Wide Association Studies (GWAS) studies, and from which three senescence-related proteins and one senescence-associated long non-coding RNA are

Table 6 Longitudinal adjusted regression models

Group	Variable statistics					Model	
Model/Parameter	Value	Upper limit	Lower limit	t Value	p Value	AIC*	LogLik*
Both sexes (df=606)							
Height	-0.0304	-0.0253	-0.0355	-11.7198	0.0E+00	1238.239	-592.1197
SP	0.7947	0.9807	0.6087	8.3772	0.0E+00		
Days:H.Dura.n	0.0003	0.0004	0.0002	4.3556	0.0E+00		
CA:Height	0.0066	0.0078	0.0054	10.9049	0.0E+00		
Days: CA:H.Dura.n	-0.0001	-0.0001	-0.0001	-4.2946	0.0E+00		
H.Dura.n: Cigs.d:Height	-5.3E-05	-2.8E-05	-7.8E-05	-4.1566	0.0E+00		
Days:H.Dose: Cigs.d:Height	2.1E-06	3.1E-06	1.1E-06	4.3108	0.0E+00		
Days: CA:H.Dose: Cigs.d:Height	-6.0E-07	-2.1E-07	-9.9E-07	-4.2968	0.0E+00		
CA:H.Dura.n: Cigs.d:Height	1.4E-05	2.1E-05	7.3E-06	4.0217	0.0001		
Days: CA: Cigs.d:Height	0.0E+00	0.0E+00	0.0E+00	3.7701	0.0002		
Days:H.Dura.n: Cigs.d	-1.1E-05	-4.9E-06	-1.7E-05	-3.4709	0.0006		
Cigs.d:Height	0.0007	0.0011	0.0003	3.3714	0.0008		
Days: CA:H.Dose:H.Dura.n: Cigs.d: Height	0.0E+00	0.0E+00	0.0E+00	3.2705	0.0011		
Days: CA:H.Dura.n: Cigs.d	2.5E-06	4.1E-06	9.3E-07	3.2365	0.0013		
CA: Cigs.d:Height	-0.0002	0.0000	-0.0004	-3.2045	0.0014		
Days	-0.0022	-0.0008	-0.0036	-2.9194	0.0036		
H.Dose:H.Dura.n: Cigs.d	0.0102	0.0173	0.0031	2.8304	0.0048		
CA:H.Dose:H.Dura.n: Cigs.d	-0.0026	-0.0006	-0.0046	-2.6804	0.0076		
Days: CA	0.0005	0.0009	0.0001	2.2438	0.0252		
Days: CA:H.Dose:Height	6.8E-06	1.3E-05	7.2E-07	2.1984	0.0283		
Days:H.Dose:Height	-2.2E-05	-2.4E-06	-4.2E-05	-2.1747	0.0300		
Days:H.Dose:H.Dura.n	-3.5E-05	-1.7E-06	-6.8E-05	-2.1086	0.0354		
H.Dose: Cigs.d	-0.1067	-0.0065	-0.2069	-2.0888	0.0371		
CA:H.Dose: Cigs.d	0.0290	0.0580	0.0000	1.9645	0.0499		
Males (df=436)							
Height	-0.0302	-0.0233	-0.0371	-8.7423	0.0E+00	913.00	-435.50
SP	0.6376	0.8542	0.4210	5.7717	0.0E+00		
CA:Height	0.0064	0.0080	0.0048	8.4711	0.0E+00		
Days:H.Dura.n	0.0003	0.0005	0.0001	3.8907	0.0001		
Days: CA:H.Dura.n	-0.0001	-0.0001	-0.0001	-3.8395	0.0001		
Days:H.Dose: Cigs.d:Height	1.6E-06	2.4E-06	8.2E-07	3.8181	0.0002		
Days: CA:H.Dose: Cigs.d:Height	-5.0E-07	-3.0E-07	-7.0E-07	-3.7217	0.0002		
Days	-0.0029	-0.0013	-0.0045	-3.6624	0.0003		
Days: CA	0.0007	0.0011	0.0003	3.3251	0.0010		
H.Dose:H.Dura.n: Cigs.d:Height	2.7E-06	4.3E-06	1.1E-06	3.2331	0.0013		
Days: CA: Cigs.d	5.0E-06	8.1E-06	1.9E-06	3.1839	0.0016		
H.Dura.n: Cigs.d:Height	-2.8E-05	-1.0E-05	-4.6E-05	-3.1058	0.0020		
CA:H.Dura.n: Cigs.d:Height	7.1E-06	1.2E-05	2.4E-06	2.9496	0.0034		
Days:H.Dura.n: Cigs.d	-8.3E-06	-2.2E-06	-1.4E-05	-2.6824	0.0076		
Days: CA:H.Dura.n: Cigs.d	2.0E-06	3.6E-06	4.3E-07	2.5562	0.0109		
Days: CA:H.Dose:H.Dura.n: Cigs.d: Height	0.0E+00	0.0E+00	0.0E+00	2.2838	0.0229		
Cigs.d:Height	0.0004	0.0008	0.0000	2.2799	0.0231		
CA: Cigs.d:Height	-0.0001	-2.0E-06	-2.0E-04	-2.1938	0.0288		
Females (df=169)							
Height	-0.0279	-0.0208	-0.0350	-7.6753	0.0E+00	394.69	-187.35
SP	1.2880	1.6663	0.9097	6.6744	0.0E+00		
CA:Height	0.0064	0.0074	0.0054	11.7493	0.0E+00		
Days: CA:H.Dose:H.Dura.n:Height	1.3E-06	2.3E-06	3.2E-07	2.7371	0.0069		
Days:H.Dose:H.Dura.n:Height	-4.5E-06	-1.2E-06	-7.8E-06	-2.7147	0.0073		
Days: CA:H.Dose:H.Dura.n: Cigs.d: Height	-1.0E-07	-1.0E-07	-1.0E-07	-2.6052	0.0100		
Days:H.Dose:H.Dura.n: Cigs.d:Height	2.0E-07	4.0E-07	4.0E-09	2.5589	0.0114		

transcribed.⁶⁹ Furthermore, opioid agonists have been shown to directly ligate the myeloid differentiation factor 2 (MD2)-toll-like receptor (TLR) 4 heterodimer leading to the downstream activation of the numerous powerful pathways linked to stimulation of the endotoxin receptor.⁷⁰ Indeed systemic endotoxaemia was recently shown to modulate the expression of 6025 genes.⁷¹ Some of the pathways activated downstream by TLR4 signalling include the cyclooxygenase, lipooxygenase, MAP kinase (JNK and P38), AP-1, inducible nitric oxide synthase (iNOS), phosphoinositol-3 kinase (PI3K) and TGF β pathways⁷² many of which have been noted to be stimulated within the first few minutes of TLR4 ligation⁷³ to be stimulated by opioids^{70 72} and to be associated with potentiating the effects of ageing.^{51 74} Many of these immune products directly exacerbate the stem cell blockade.⁷⁵ This then implies that opioid dependency may be conceptualised as chronically, if largely subclinically, ill.

It is very exciting that new research has identified that these processes also act particularly in proopiomelanocortin (POMC) neurons of the paraventricular and arcuate nuclei of the mediobasal hypothalamus which are key determinants of the body's metabolic homeostasis, glucostatic and lipostatic functions, energy balance, appetitive drives, sympathoadrenal activation state and even lifespan modulation in some organisms,^{76–78} and that derangements in this region cause metabolic syndrome and its numerous related disorders in model organisms including mammals and likely also humans.⁷⁹ These workers have shown that the activation of the MD2/TLR4/IKK β /NF- κ B cascade induces endoplasmic reticulum, mitochondrial and autophagic stress, which along with reduced neurogenesis, increased POMC neuronal apoptosis⁷⁷ and glial activation and reactive gliosis^{79 80} underlie these numerous disorders and derangements. While this research focuses on TLR4 ligation of unsaturated fatty acids and oxidised LDLs, opioids have been shown to act similarly as xenobiotics through MD2-TLR4⁸¹ and opioid agonists have been shown to produce POMC cell hyperpolarisation and relative refractoriness⁴⁴ while opioid antagonists have the reverse effect.⁸² Small molecule TLR4 inhibitors are under development for several therapeutic applications.^{83 84} The confluence then of these two important lines of recent research has the potential to produce major conceptual and therapeutic advances in this field. A clear understanding of direct links from xenobiotic-TLR4-NF- κ B signalling to sympathoadrenal tone and hypothalamic lifespan control has the potential to revolutionise the direction of therapeutic endeavours in the treatment of opioid dependence.

It is fascinating that the promoters for two of the key stem cell genes, Oct4 and Nanog, have response elements in their promoters for STAT-1 and STAT-3 which are commonly produced as a result of cytokine signalling, particularly by gp-130 cytokines such as IL-6 and leukaemia inhibitory factor.^{85 86} Furthermore, there is a three-way cross-talk between stem cell and

metabolic-immune genes including STAT-3 and PPAR γ .⁸⁷ Other cytokines, such as IL-1, have been noted in opioid dependency⁸ and are usually indicative of inflammasome activation, and fractalkine and MCP-1/CCL2 have also been found to be elevated and are relevant to neuropathological and atherogenic processes.⁷⁰ As TLR4 shares many ligands and cochaperones with the receptor for advanced glycation end products this auto-amplificatory system may also be involved.^{88–91}

This study had various strengths and limitations. The application of sophisticated cardiovascular measurement technology to the problem of drug addiction is unique to this group. Extended follow-up and recruitment of ODP is also notoriously difficult. The statistical techniques employed here are advanced and robust. Design strengths include its complementary cross-sectional and longitudinal design. Limitations of the present work relate to difficulties quantitating frequently variable amounts of past drug use in the absence of a formal measurement instrument. Use of a formal instrument such as the addiction severity index, and spot tests for drugs and alcohol are indicated in future replications of this study. Employment of structural tests and mechanistic studies to investigate pathophysiological pathways, would be advisable in future iterations of this work.

It is important to remember that the models and results described in this work are not represented as reliable and generalisable calibrations of the cardiovascular effects of opioid exposure, in combination with other well-established risk factors. These models are the result of an empirical investigation of many correlated risk factors from a particular clinical cohort. It is most unlikely that similar model parameter estimates would be reproduced in a study of a different clinical cohort. The results serve a much more limited objective: is there evidence of an opioid effect on cardiovascular health, taking account of other known risk factors. We suggest that there is evidence for such an effect; although we must accept that this evidence is in part contingent on the adequacy of the model for these known risk factors. This is a general problem facing all studies of correlated risk factors, in the absence of a well-established mechanistic model. We would consider the impact of opioids to be established only if similar results were obtained in analysis of data from an independent case series. In this context the confirmatory nature of the present data to essentially identical results from the cross-sectional (only) data from Iran among men^{16 17} and the various other findings noted in the literature review in the introductory section of the present report are particularly pertinent.

In summary, the present study documents elevated vascular stiffness and age associated with opioid use which is robust to multiple adjustments to other known risk factors. A strong dose-response effect was noted, and the duration of treatment administration was noted to be particularly important, being related to elevations in vascular age of the first, second, third and fourth order.

This finding indicates limitation of treatment duration wherever clinically possible. The effect was also worse in women. Overall this study raises many further mechanistic questions which indicate further study on this complex but important model condition.

Acknowledgements The authors would like to thank Dr Mervyn Thomas of Emphron for assistance with the statistics and graphical design.

Contributors The study was designed, the data collected, the analyses performed, the literature reviewed and the first draft written by ASR. GKH provided important intellectual input, assisted with study design, and revised and reviewed the manuscript. Both authors confirm the accuracy and integrity of the work and data collection and analysis.

Funding This research received no specific grant from any funding agency in the public, commercial or not-for-profit sectors.

Competing interests None.

Ethics approval Southcity Medical Centre Human Ethics Research Committee.

Provenance and peer review Not commissioned; externally peer reviewed.

Data sharing statement No additional data are available.

Open Access This is an Open Access article distributed in accordance with the terms of the Creative Commons Attribution (CC BY 3.0) license, which permits others to distribute, remix, adapt and build upon this work, for commercial use, provided the original work is properly cited. See: <http://creativecommons.org/licenses/by/3.0/>

REFERENCES

- Rosen D, Smith ML, Reynolds CF III. The prevalence of mental and physical health disorders among older methadone patients. *Am J Geriatr Psychiatry* 2008;16:488–97.
- Cooper OB, Brown TT, Dobs AS. Opiate drug use: a potential contributor to the endocrine and metabolic complications in human immunodeficiency virus disease. *Clin Infect Dis* 2003;37(Suppl 2): S132–6.
- Ceriello A, Quatraro A, Giugliano D. Opiate addict as diabetic patient? *Diabetes Care* 1988;11:443.
- Kolarzyk E, Pach D, Wojtowicz B, *et al*. Nutritional status of the opiate dependent persons after 4 years of methadone maintenance treatment. *Przegląd Lekarski* 2005;62:373–7.
- Brunton LL, Lazo JS, Parker KL, eds. *Goodman and Gilman's the pharmacologic basis of therapeutics* 11th edn. New York: McGraw Hill, 2006.
- Reece AS. Relative and age dependent stimulation of soluble and cellular immunity in opiate dependence. *J Addict Med* 2012;6:10–17.
- Reece AS. High sensitivity CRP in opiate addiction: relative and age-dependent elevations. *Cardiovasc Toxicol* 2012;12:149–57.
- Neri S, Bruno CM, Pulvirenti D, *et al*. Randomized clinical trial to compare the effects of methadone and buprenorphine on the immune system in drug abusers. *Psychopharmacology (Berl)* 2005;179:700–4.
- Reece AS. Absolute and age dependent elevations of serum calcium and phosphate and their products in clinical opiate dependence. *J Subs Abuse* 2014;19:125–33.
- Reece AS, Davidson P. Deficit of circulating stem–progenitor cells in opiate addiction: a pilot study. *Subst Abuse Treat Prev Policy* 2007;2:19–28.
- Darke S, Dufou J, Torok M. The comparative toxicology and major organ pathology of fatal methadone and heroin toxicity cases. *Drug Alcohol Depend* 2010;106:1–6.
- Darke S, Kaye S, Dufou J. Systemic disease among cases of fatal opioid toxicity. *Addiction* 2006;101:1299–305.
- Degenhardt L, Randall D, Hall W, *et al*. Mortality among clients of a state-wide opioid pharmacotherapy program over 20 years: risk factors and lives saved. *Drug Alcohol Depend* 2009;105:9–15.
- Khademi H, Malekzadeh R, Pourshams A, *et al*. Opium use and mortality in Golestan Cohort Study: prospective cohort study of 50,000 adults in Iran. *BMJ* 2012;344:e2502.
- Sadeghian S, Darvish S, Davoodi G, *et al*. The association of opium with coronary artery disease. *Eur J Cardiovasc Prev Rehabil* 2007;14:715–17.
- Sadeghian S, Dowlatshahi S, Karimi A, *et al*. Epidemiology of opium use in 4398 patients admitted for coronary artery bypass graft in Tehran Heart Center. *J Cardiovasc Surg (Torino)* 2011;52:140–1.
- Sadeghian S, Graill P, Salarifar M, *et al*. Opium consumption in men and diabetes mellitus in women are the most important risk factors of premature coronary artery disease in Iran. *Int J Cardiol* 2010;141:116–18.
- Smyth B, Hoffman V, Fan J, *et al*. Years of potential life lost among heroin addicts 33 years after treatment. *Prev Med* 2007;44:369–74.
- Reece AS, Hulse GK. Impact of opioid pharmacotherapy on arterial stiffness and vascular ageing: cross-sectional and longitudinal studies. *Cardiovasc Toxicol* 2013;13:254–66.
- Reece AS, Hulse GK. Reduction in arterial stiffness and vascular age by naltrexone-induced interruption of opiate agonism. *BMJ Open* 2013;3. doi:10.1136/bmjopen-2013-002610
- Hosseini SK, Masoudkabar F, Vasheghani-Farahani A, *et al*. Opium consumption and coronary atherosclerosis in diabetic patients: a propensity score-matched study. *Planta Med* 2011;77:1870–5.
- Charney DS, Redmond DE Jr, Galloway MP, *et al*. Naltrexone precipitated opiate withdrawal in methadone addicted human subjects: evidence for noradrenergic hyperactivity. *Life Sci* 1984;35:1263–72. doi:10.1136/bmjopen-2013-002610
- Reece AS, Hulse GK. Elevation of central arterial stiffness and vascular ageing in opiate withdrawal: cross-sectional and longitudinal studies. *Cardiovasc Toxicol* 2012;13:55–67.
- Chien KR, Karsenty G. Longevity and lineages: toward the integrative biology of degenerative diseases in heart, muscle, and bone. *Cell* 2005;120:533–44.
- Lakatta EG, Wang M, Najjar SS. Arterial aging and subclinical arterial disease are fundamentally intertwined at macroscopic and molecular levels. *Med Clin North Am* 2009;93:583–604. Table of Contents.
- Reece AS. Hair graying in substance addiction. *Archiv Dermatol* 2007;143:116–18.
- Kim TW, Alford DP, Malabanan A, *et al*. Low bone density in patients receiving methadone maintenance treatment. *Drug Alcohol Depend* 2006;85:258–62.
- Reece AS. Evidence of accelerated ageing in clinical drug addiction from immune, hepatic and metabolic biomarkers. *Immun Ageing* 2007;4:6–15.
- Randall D, Degenhardt L, Vajdic CM, *et al*. Increasing cancer mortality among opioid-dependent persons in Australia: a new public health challenge for a disadvantaged population. *Aust NZ J Public Health* 2011;35:220–5.
- Reece AS, Hulse GK. Lifetime opiate exposure as an independent and interactive cardiovascular risk factor in males: a cross-sectional clinical study. *Vasc Health Risk Manag* 2013;9:551–59.
- Reece AS, Hulse GK. Opiate exposure increases arterial stiffness, advances vascular age and is an independent cardiovascular risk factor in females: a cross-sectional clinical study. *World J Cardiovasc Dis* 2013;3:361–70.
- Reece AS, Hulse GK. Duration of opiate exposure as a determinant of arterial stiffness and vascular age in male opiate dependence: a longitudinal study. *J Clin Pharm Ther* 2013;39:158–67.
- Reece AS, Hulse GK. Opiate dependence as an independent and interactive risk factor for arterial stiffness and cardiovascular ageing—a longitudinal study in females. *J Clin Med Res* 2013;5:356–67.
- Reece AS. Psychosocial and treatment correlates of opiate free success in a clinical review of a naltrexone implant program. *Subst Abuse Treat Prev Policy* 2007;2:35–49.
- Breslow NE, Day NE. *Statistical methods in cancer research. volume II: The design and analysis of cohort studies*. 1st edn. Lyon: International Agency for Cancer Research, 1987.
- Tibshirani R. Estimating transformations for regression via additivity and variance stabilization. *J Am Statist Assoc* 1988;83:394–405.
- Kacinko SL, Jones HE, Johnson RE, *et al*. Correlations of maternal buprenorphine dose, buprenorphine, and metabolite concentrations in meconium with neonatal outcomes. *Clin Pharmacol Ther* 2008;84:604–12.
- Hulse G, White J, Cape G, eds. *Management of drug and alcohol problems*. Sydney: Oxford University Press, 2002.
- Oviedo-Joekes E, Brissette S, Marsh DC, *et al*. Diacetylmorphine versus methadone for the treatment of opioid addiction. *N Engl J Med* 2009;361:777–86.
- SphygmoCor, ed. *Software operator's guide, pulse wave analysis system, SCOR-Px*. Sydney: AtCor Medical, 2006.
- Klein SL. Sex influences immune responses to viruses, and efficacy of prophylaxis and treatments for viral diseases. *Bioessays* 2012;34:1050–9.
- Sato R, Maesawa C, Fujisawa K. Prevention of critical telomere shortening by oestradiol in human normal hepatic cultured cells and carbon tetrachloride induced rat liver fibrosis. *Gut* 2004;53:1001–9.

43. Reece AS. Hypothalamic opioid-melanocortin appetitive balance and addictive craving. *Medical hypotheses* 2011;76:132–7.
44. Cowley MA, Smart JL, Rubinstein M, *et al.* Leptin activates anorexigenic POMC neurons through a neural network in the arcuate nucleus. *Nature* 2001;411:480–4.
45. Nichols WW, O'Rourke MF, eds. *McDonald's blood flow in arteries: theoretical, experimental and clinical principals*. London: Hodder Arnold, 2005.
46. O'Rourke MF, Pauca AL. Augmentation of the aortic and central arterial pressure waveform. *Blood Press Monit* 2004;9:179–85.
47. Reece AS. High-sensitivity CRP in opiate addiction: relative and age-dependent elevations. *Cardiovasc Toxicol* 2012;12:149–57.
48. Fauci AS, Braunwald E, Kasper DL, *et al.* *Harrison's principles of internal medicine*. 17th edn. New York: McGraw Hill, 2008.
49. Lakatta EG. Arterial aging is risky. *J Appl Physiol* 2008;105:1321–2.
50. Le Couteur DG, Lakatta EG. A vascular theory of aging. *J Gerontol A Biol Sci Med Sci* 2010;65:1025–7.
51. Hadley EC, Lakatta EG, Morrison-Bogorad M, *et al.* The future of aging therapies. *Cell* 2005;120:557–67.
52. Furumoto K, Inoue E, Nagao N, *et al.* Age-dependent telomere shortening is slowed down by enrichment of intracellular vitamin C via suppression of oxidative stress. *Life Sci* 1998;63:935–48.
53. von Zglinicki T. Oxidative stress shortens telomeres. *Trends Biochem Sci* 2002;27:339–44.
54. von Zglinicki T, Pilger R, Sittler N. Accumulation of single-strand breaks is the major cause of telomere shortening in human fibroblasts. *Free Radic Biol Med* 2000;28:64–74.
55. Reece AS. Chronic immune stimulation as a contributing cause of chronic disease in opiate addiction including multi-system ageing. *Med Hypotheses* 2010;75:613–19.
56. Reece AS. Differing age related trajectories of dysfunction in several organ systems in opiate dependence. *Aging Clin Exp Res* 2011;24:85–96.
57. Weber T, Auer J, O'Rourke MF, *et al.* Arterial stiffness, wave reflections, and the risk of coronary artery disease. *Circulation* 2004;109:184–9.
58. Williams B, Lacy PS, Thom SM, *et al.* Differential impact of blood pressure-lowering drugs on central aortic pressure and clinical outcomes: principal results of the Conduit Artery Function Evaluation (CAFE) study. *Circulation* 2006;113:1213–25.
59. Nichols WW. Clinical measurement of arterial stiffness obtained from noninvasive pressure waveforms. *Am J Hypertens* 2005;18(1 Pt 2):3S–10S.
60. Degenhardt L, Larney S, Randall D, *et al.* Causes of death in a cohort treated for opioid dependence between 1985 and 2005. *Addiction* 2014;109:90–9.
61. Reece AS. Manifold implications of forgotten hyperglycaemia in clinical opiate dependence. *Drug Chem Toxicol* 2013;36:55–66.
62. Reece AS. Relative and age-dependent stimulation of soluble and cellular immunity in opiate dependence. *J Addict Med* 2012;6:10–17.
63. Reece AS. Differing age related trajectories of dysfunction in several organ systems in opiate dependence. *Aging Clin Exp Res* 2012;24:85–96.
64. Reece AS. Denitition of addiction in Queensland: poor dental status and major contributing drugs. *Aust Dent J* 2007;52:144–9.
65. Reece A. Lifetime prevalence of cervical neoplasia in addicted and medical patients. *Aust NZ J Obstet Gynaecol* 2007;47:419–23.
66. Cheng GL, Zeng H, Leung MK, *et al.* Heroin abuse accelerates biological aging: a novel insight from telomerase and brain imaging interaction. *Transl Psychiatry* 2013;3:e260.
67. Cheng F, McLaughlin PJ, Verderame MF, *et al.* The OGF-OGFr axis utilizes the p16INK4a and p21WAF1/CIP1 pathways to restrict normal cell proliferation. *Mol Biol Cell* 2009;20:319–27.
68. Zagon IS, Verderame MF, McLaughlin PJ. The biology of the opioid growth factor receptor (OGFr). *Brain Res* 2002;38:351–76.
69. Pasmant E, Sabbagh A, Vidaud M, *et al.* ANRIL, a long, noncoding RNA, is an unexpected major hotspot in GWAS. *FASEB J* 2010;25:444–48.
70. Hutchinson MR, Shavit Y, Grace PM, *et al.* Exploring the neuroimmunopharmacology of opioids: an integrative review of mechanisms of central immune signaling and their implications for opioid analgesia. *Pharmacol Rev* 2011;63:772–810.
71. Starr ME, Hu Y, Stromberg AJ, *et al.* Gene expression profile of mouse white adipose tissue during inflammatory stress: age-dependent upregulation of major pro-coagulant factors. *Aging Cell* 2013;12:194–206.
72. Collier JK, Hutchinson MR. Implications of central immune signaling caused by drugs of abuse: mechanisms, mediators and new therapeutic approaches for prediction and treatment of drug dependence. *Pharmacol Ther* 2012;134:219–45.
73. Grzanna R, Brown RM. *NIDA Research Monograph 125: activation of intermediate early genes by drugs of abuse*. Bethesda, MD: National Institutes of Drug Abuse, NIH, 1993:1–220.
74. Kirkwood TB. Understanding the odd science of aging. *Cell* 2005;120:437–47.
75. Hoing S, Rudhard Y, Reinhardt P, *et al.* Discovery of inhibitors of microglial neurotoxicity acting through multiple mechanisms using a stem-cell-based phenotypic assay. *Cell Stem Cell* 2012;11:620–32.
76. Zhang G, Li J, Purkayastha S, *et al.* Hypothalamic programming of systemic ageing involving IKK- β , NF- κ B and GnRH. *Nature* 2013;497:211–16.
77. Li J, Tang Y, Cai D. IKK β /NF- κ B disrupts adult hypothalamic neural stem cells to mediate a neurodegenerative mechanism of dietary obesity and pre-diabetes. *Nat Cell Biol* 2012;14:999–1012.
78. Purkayastha S, Zhang G, Cai D. Uncoupling the mechanisms of obesity and hypertension by targeting hypothalamic IKK- β and NF- κ B. *Nat Med* 2011;17:883–7.
79. Thaler JP, Yi CX, Schur EA, *et al.* Obesity is associated with hypothalamic injury in rodents and humans. *J Clin Invest* 2012;122:153–62.
80. Czapski GA, Gajkowska B, Strosznajder JB. Systemic administration of lipopolysaccharide induces molecular and morphological alterations in the hippocampus. *Brain Res* 2010;1356:85–94.
81. Wang X, Loram LC, Ramos K, *et al.* Morphine activates neuroinflammation in a manner parallel to endotoxin. *Proc Natl Acad Sci USA* 2012;109:6325–30.
82. Billes SK, Greenway FL. Combination therapy with naltrexone and bupropion for obesity. *Expert Opin Pharmacother* 2011;12:1813–26.
83. Neal MD, Jia H, Eyer B, *et al.* Discovery and validation of a new class of small molecule Toll-like receptor 4 (TLR4) inhibitors. *PLoS ONE* 2013;8:e65779.
84. Theberge FR, Li X, Kambhampati S, *et al.* Effect of chronic delivery of the Toll-like receptor 4 antagonist (+)-naltrexone on incubation of heroin craving. *Biol Psychiatry* 2013;73:729–37.
85. Kim CG, Chung IY, Lim Y, *et al.* A Tcf/Lef element within the enhancer region of the human NANOG gene plays a role in promoter activation. *Biochem Biophys Res Commun* 2011;410:637–42.
86. Yang HM, Do HJ, Oh JH, *et al.* Characterization of putative cis-regulatory elements that control the transcriptional activity of the human Oct4 promoter. *J Cell Biochem* 2005;96:821–30.
87. Folmes CD, Dzeja PP, Nelson TJ, *et al.* Metabolic plasticity in stem cell homeostasis and differentiation. *Cell Stem Cell* 2012;11:596–606.
88. Zurolo E, Iyer A, Maroso M, *et al.* Activation of Toll-like receptor, RAGE and HMGB1 signalling in malformations of cortical development. *Brain* 2011;134(Pt 4):1015–32.
89. Nogueira-Machado JA, Volpe CM, Veloso CA, *et al.* HMGB1, TLR and RAGE: a functional tripod that leads to diabetic inflammation. *Expert Opin Ther Targets* 2011;15:1023–35.
90. Sakaguchi M, Murata H, Yamamoto K, *et al.* TIRAP, an adaptor protein for TLR2/4, transduces a signal from RAGE phosphorylated upon ligand binding. *PLoS ONE* 2011;6:e23132.
91. Veloso CA, Fernandes JS, Volpe CM, *et al.* TLR4 and RAGE: similar routes leading to inflammation in type 2 diabetic patients. *Diabetes Metab* 2011;37:336–42.



Impact of lifetime opioid exposure on arterial stiffness and vascular age: cross-sectional and longitudinal studies in men and women

Albert Stuart Reece and Gary Kenneth Hulse

BMJ Open 2014 4:
doi: 10.1136/bmjopen-2013-004521

Updated information and services can be found at:
<http://bmjopen.bmj.com/content/4/6/e004521.full.html>

These include:

Data Supplement

"Supplementary Data"

<http://bmjopen.bmj.com/content/suppl/2014/06/01/bmjopen-2013-004521.DC1.html>

References

This article cites 83 articles, 12 of which can be accessed free at:
<http://bmjopen.bmj.com/content/4/6/e004521.full.html#ref-list-1>

Open Access

This is an Open Access article distributed in accordance with the terms of the Creative Commons Attribution (CC BY 3.0) license, which permits others to distribute, remix, adapt and build upon this work, for commercial use, provided the original work is properly cited. See: <http://creativecommons.org/licenses/by/3.0/>

Email alerting service

Receive free email alerts when new articles cite this article. Sign up in the box at the top right corner of the online article.

Notes

To request permissions go to:
<http://group.bmj.com/group/rights-licensing/permissions>

To order reprints go to:
<http://journals.bmj.com/cgi/reprintform>

To subscribe to BMJ go to:
<http://group.bmj.com/subscribe/>

SUPPLEMENTARY TABLES

Supplementary Table 1.: Bivariate Comparisons of
Baseline Sociodemographic, Laboratory and Drug Use Variables

	Control	Opiate Dependence	t-value	df	P
Chronologic_Age (Yrs)	29.96_(0.45)	34.55_(0.32)	-8.262	1082.22	0.0000
<i>Biometrics</i>					
Height_(cm)	173.59_(0.37)	173.51_(0.33)	0.172	1261.00	0.8633
Weight_(kg)	73.21_(0.58)	74.98_(0.63)	-2.071	1260.00	0.0385
BMI_(kg/m²)	24.25_(0.17)	24.8_(0.17)	-2.263	1256.60	0.0238
<i>Drug Use</i>					
Tobacco (%Smokers)	0.16_(0.02)	0.92_(0.01)	-41.558	1029.42	0.0000
Cigarettes/d	1.78_(0.22)	16.64_(0.37)	-34.982	1089.65	0.0000
Minutes After Smoking	121.98_(8.48)	96.48_(12.98)	1.645	757.57	0.1004
Heroin Dose (g/d)	0_(0)	0.53_(0.02)	-21.717	682.28	0.0000
Heroin Duration (Yr)	0.09_(0.05)	13.01_(0.33)	-38.783	695.26	0.0000
Lifetime Heroin Exposure (g-Yr)	0.03_(0.02)	7.81_(0.65)	-11.987	666.93	0.0000
Buprenorphine Dose (mg/d)	_()	6.98_(0.21)		586.00	
Methadone Dose (mg/d)	_()	63_(4.01)		66.00	
<i>Laboratory Values</i>					
Cholesterol (mmol/l)	4.78_(0.08)	4.45_(0.04)	3.497	781.00	0.0005
Triglyceride (mmol/l)	1.43_(0.08)	1.4_(0.04)	0.439	781.00	0.6608
HDL (mmol/l)	1.31_(0.04)	1.24_(0.02)	1.551	522.00	0.1215
LDL (mmol/l)	2.87_(0.1)	2.47_(0.04)	3.698	119.75	0.0003
ALT (IU/L)	32.8_(2.07)	65.59_(4.04)	-7.214	778.88	0.0000
AST (IU/L)	30.92_(3.9)	48.04_(2.26)	-3.793	318.80	0.0002
Glucose (mmol/l)	5.03_(0.14)	5.49_(0.2)	-1.231	785.00	0.2185
Creatinine (mcmol/l)	78.86_(1.28)	79.75_(0.68)	-0.634	785.00	0.5263
Urea (mmol/l)	5.18_(0.09)	5.12_(0.21)	0.155	783.00	0.8765
Albumin (g/L)	44.23_(0.32)	43.6_(0.2)	1.533	784.00	0.1256
Globulin (g/L)	29.3_(0.26)	31.53_(0.2)	-6.735	421.08	0.0000
CRP (mg/L)	3.43_(0.65)	6.11_(0.42)	-3.459	269.11	0.0006
ESR (mm/hr)	7.85_(0.59)	12.76_(0.5)	-6.374	365.75	0.0000
Lymphocytes (x10⁹/ml)	2.32_(0.05)	2.54_(0.04)	-2.754	759.00	0.0060
Monocytes (x10⁹/ml)	0.56_(0.02)	0.63_(0.01)	-2.404	629.00	0.0165
Calcium (mmol/l)	2.37_(0.01)	2.37_(0)	0.111	784.00	0.9119
Phosphate (mmol/l)	1.18_(0.02)	1.22_(0.01)	-2.491	334.08	0.0132
HBcAb Positivity Rate	0.17_(0.05)	0.25_(0.02)	-1.514	70.28	0.1344
HCV Ab Positivity Rate	0.52_(0.07)	0.82_(0.02)	-4.161	56.84	0.0001

Supplementary Table 2.:

Bivariate Comparisons of Central and Peripheral Cardiovascular Parameters

	Control	Opiate Dependence	t-value	df	p
Operator Index	88.58_(0.26)	88.34_(0.25)	0.683	1261.00	0.4946
Ages					
Chronologic_Age	29.96_(0.45)	34.55_(0.32)	-8.262	1082.22	0.0000
Vascular_Age	32.57_(0.68)	39.12_(0.7)	-6.729	1255.67	0.0000
Log(CA)	3.35_(0.01)	3.51_(0.01)	-10.375	1076.20	0.0000
Log(RA)	3.39_(0.02)	3.57_(0.02)	-7.448	1242.33	0.0000
RA-CA_Difference	2.61_(0.47)	4.57_(0.57)	-2.652	1245.27	0.0081
RA/CA	1.09_(0.01)	1.13_(0.02)	-1.821	1259.62	0.0688
Augmentation					
C_AP_HR75	1.86_(0.21)	3.94_(0.19)	-7.351	1260.00	0.0000
C_AGPH_HR75	4.78_(0.56)	10.17_(0.46)	-7.503	1260.00	0.0000
C_PH	35.29_(0.29)	37.36_(0.28)	-5.123	1261.00	0.0000
C_TIR	154.76_(0.65)	152.42_(0.54)	2.783	1233.00	0.0055
C_AL	8.25_(0.23)	9.14_(0.18)	-3.078	1037.00	0.0021
C_ATI	49.83_(1.6)	57.02_(1.32)	-3.488	1037.00	0.0005
PPAmpRatio	156.97_(0.79)	150.79_(0.74)	5.686	1260.00	0.0000
P_MAX_DPDT	844.69_(7.35)	850.89_(7.16)	-0.601	1261.00	0.5478
Timing					
HR	69.26_(0.47)	69.99_(0.45)	-1.100	1261.00	0.2714
ED	324.74_(0.84)	323.5_(0.82)	1.054	1261.00	0.2923
C_SVI	144.72_(1.29)	142.43_(1.11)	1.356	1261.00	0.1754
C_DTI	3015.42_(16.3)	3023.56_(15.82)	-0.358	1243.62	0.7201
C_TTI	2151.42_(15.84)	2186.99_(15.28)	-1.609	1261.00	0.1079
Pressure					
SP	123.29_(0.47)	123.77_(0.51)	-0.696	1260.87	0.4862
DP	68.6_(0.38)	68.18_(0.38)	0.775	1255.83	0.4383
C_SP	105.16_(0.45)	106.99_(0.46)	-2.836	1254.81	0.0046
C_DP	69.92_(0.38)	69.69_(0.39)	0.432	1256.15	0.6657
C_ESP	92.72_(0.47)	94.54_(0.46)	-2.769	1261.00	0.0057
C_MEANP	86.19_(0.39)	86.93_(0.4)	-1.305	1256.22	0.1920

Supplementary Table 3.:

Cross-sectional Factor Analysis

lm(log (RA/BMI) ~ log(CA)*Addictive Status)

Parameter	Variable Statistics				Model Summaries		
	Estimate	Std. Error	t Value	Pr(> t)	F	dF	P
<i>All Patients</i>							
Opiates	-0.58071	0.2615	-2.221	0.0265	184.8	3, 1258	<2.2E-16
CA: Opiates	0.1756	0.0757	2.32	0.0205			
<i>Males</i>							
Opiates	-0.73731	0.3270	-2.255	0.0244	109.1	3, 862	<2.2E-16
CA: Opiates	0.2128	0.0950	2.24	0.0253			
<i>Females</i>							
CA: Opiates	0.0300	0.0109	2.747	0.0063	116.7	2, 393	<2.2E-16

Supplementary Table 4.:

Longitudinal Factor Analysis

lme(log (RA/CA) ~ log(CA)*Days*Addictive Status)

Group / Parameter	Parameter Values				Pr(> t)	Model Parameters	
	Value	Std.Error	DF	t-value		AIC	LogLik
<i>All Patients</i>							
CA:Days	0.00015	0.00006	811	2.5762	0.0102	1124.528	-555.2641
Days:Opiates	0.00010	0.00003	811	2.9978	0.0028		
<i>Males</i>							
Days:Control	-0.00001	0.00003	551	-0.2042	0.8383	780.7702	-384.3851
Days:Opiates	0.00005	0.00002	551	2.6199	0.009		
<i>Females</i>							
Days:Opiates	-0.00115	0.00052	256	-2.2160	0.0276	413.4612	-198.7306
CA:Days:Opiates	0.00032	0.00014	256	2.2185	0.0274		

Supplementary Table 5.:
Cross-sectional Factor Analysis
Interactions of Sex with CA.

Variable	Variable Statistics					Model Summaries*	
	Parameter	Estimate	Std. Error	z / t - Value	P	LogLik / F	Wald / dF
<i>Tobit Models*</i>							
RA*	Male.Sex	0.94149	0.32377	2.908	0.00364	-787.6	813.7
RA*	CA: Male.Sex	-0.26694	0.09293	-2.873	0.00407	-787.6	813.7
<i>Linear Regression Models</i>							
C_AP_HR75	CA: Male.Sex	-0.87594	0.06461	-13.56	<2E-16	580.8	2, 1259
C_AGPH_HR75	CA: Male.Sex	-2.4701	0.1626	-15.2	<2E-16	75.55	3, 1259
C_PH	Male.Sex	21.987	4.682	4.696	2.94E-06	75.55	2, 1259
C_PH	CA: Male.Sex	-5.63	1.354	-4.158	3.43E-05	75.55	2, 1259
PPAmpRatio	CA: Male.Sex	2.6901	0.2569	10.47	<2E-16	483.6	2, 1259
C_T1R	Male.Sex	9.6358	0.8174	11.79	<2E-16	130.6	2, 1232

All Interactive Models, except for C_T1R

All model P-values < 2.0E-16

* - Model for RA is tobit (with LogLik and Wald Statistics). All others are standard linear regression models with CA.

Supplementary Table 6.:
Longitudinal Factor Analysis
Interactions of Time, CA and Sex.

Group	Variable Statistics					Model	
Parameter	Value	Std.Error	DF	t-value	p-value	AIC	LogLik
<i>RA</i>							
CA: Days: Opiates	2.5E-05	9.0E-06	809	2.7328	0.0064	1149.41	-564.7
Days	-0.0005	0.0002	809	-2.5125	0.0122		
CA: Days	0.0001	0.0001	809	2.3973	0.0167		
<i>C_AGPH_HR75</i>							
CA	30.8204	1.6476	804	18.7068	0.0000	14393.8	-7181.9
Days: Male.Sex	-0.0356	0.0117	804	-3.0428	0.0024		
CA: Days: Male.Sex	0.0087	0.0030	804	2.8711	0.0042		
CA: Male.Sex	-5.1991	2.0124	804	-2.5836	0.0100		
Days: Male.Sex: Opiates	0.0335	0.0142	804	2.3631	0.0184		
CA: Days: Female.Sex: Opiates	0.0124	0.0058	804	2.1522	0.0317		
CA: Days: Male.Sex: Opiates	-0.0079	0.0037	804	-2.1274	0.0337		
Days: Female.Sex: Opiates	-0.0440	0.0218	804	-2.0213	0.0436		
<i>C_AP_HR75</i>							
Days: Male.Sex	-0.0198	0.0049	806	-4.0071	0.0001	10866.4	-5420.2
CA: Days: Male.Sex	0.0050	0.0013	806	3.9398	0.0001		
CA: Days: Opiates	0.0005	0.0002	806	2.8924	0.0039		
Days: Female.Sex	-0.0121	0.0045	806	-2.6830	0.0074		
CA: Days: Male.Sex: Opiates	-0.0041	0.0016	806	-2.5760	0.0102		
CA: Days: Female.Sex	0.0030	0.0012	806	2.5498	0.0110		
Days: Male.Sex: Opiates	0.0150	0.0060	806	2.5092	0.0123		
CA: Male.Sex	-2.0296	0.8114	806	-2.5013	0.0126		
<i>C_PH</i>							
Male.Sex	27.1005	5.0888	1198	5.3255	0.0E+00	13297.5	-6633.7
CA: Male.Sex	-7.0598	1.4690	804	-4.8058	0.0E+00		
Days	-0.0306	0.0085	804	-3.6178	0.0003		
CA: Days	0.0080	0.0022	804	3.6326	0.0003		
Days: Male.Sex: Opiates	0.0298	0.0106	804	2.8028	0.0052		
Opiates	13.5294	4.8766	804	2.7743	0.0057		
CA: Days: Male.Sex: Opiates	-0.0079	0.0029	804	-2.6945	0.0072		
CA: Opiates	-3.6162	1.4128	804	-2.5596	0.0107		

Supplementary Table 7.:

Significance Levels for Quartile P Values <0.1

Cross-sectional and Longitudinal Studies

Cross-sectional Studies

Group / Parameter	Parameter Values				Model Parameters		
	Estimate	Std. Error	t Value	Pr(> t)	F	dF	P
<i>All Patients</i>							
H.Exposure.Level.3	-0.7103	0.3845	-1.847	0.0650	1.126	7, 1235	0.3437
CA: H.Exposure.Level.3	0.2056	0.1069	1.924	0.0546			
<i>Males</i>							
<i>Females</i>							
CA: H.Exposure.Level.3	0.0265	0.0139	1.911	0.0568	1.193	4, 388	0.3133

Longitudinal Studies

Group / Parameter	Parameter Values					Model Parameters	
	Value	Std.Error	DF	t-value	Pr(> t)	AIC	LogLik
<i>All Patients</i>							
Days: H.Exposure.Level.1	0.00013	0.00004	810	2.9797	0.0030	1152.85	-568.42
Days: H.Exposure.Level.2	0.00016	0.00004	810	3.6254	0.0003		
Days: H.Exposure.Level.3	0.00006	0.00004	810	1.7297	0.0841		
<i>Males</i>							
Days: H.Exposure.Level.1	0.00011	0.00005	549	2.2010	0.0281	828.94	-406.47
Days: H.Exposure.Level.2	0.00014	0.00005	549	2.5507	0.0110		
<i>Females</i>							
Days: H.Exposure.Level.1	-0.00176	0.00100	253	-1.7637	0.0790	475.43	-226.71
Days: H.Exposure.Level.3	-0.00203	0.00103	253	-1.9681	0.0501		
Days: CA: H.Exposure.Level.1	0.00050	0.00028	253	1.7653	0.0787		
Days: CA: H.Exposure.Level.3	0.00054	0.00028	253	1.9298	0.0547		

Supplementary Table 8.:

Summary of Longitudinal Models of Quartiles of Opiate Exposure

(lme (Variable/CA)~ Time*Opiate.Exposure.Quartile)

Parameter		Variable Statistics					Model	
Group	Variable	Value	Std.Error	DF	t-value	P-value	AIC	LogLik
<i>RA/CA</i>								
All Patients	Days: H.Exposure.Level.2	0.00007	0.00003	811	2.26807	0.0236	1143.78	-564.89
Males	Days: H.Exposure.Level.2	0.00007	0.00004	550	2.066028	0.0393	813.62	-399.81
Females	-							
<i>C_AGPH_HR75 / CA</i>								
All Patients	Days	0.00004	0.00001	811	3.372907	8E-04	1176.95	-581.48
	H.Exposure.Level.1	0.15146	0.02842	811	5.329696	0E+00		
	H.Exposure.Level.2	0.17167	0.02721	811	6.308965	0E+00		
	H.Exposure.Level.3	0.20433	0.02761	811	7.400001	0E+00		
Males	Days	0.00004	0.00001	550	2.861191	0.0044	645.42	-315.71
	H.Exposure.Level.1	0.14683	0.03182	550	4.614867	0E+00		
	H.Exposure.Level.2	0.15382	0.03017	550	5.099172	0E+00		
	H.Exposure.Level.3	0.21693	0.02999	550	7.233373	0E+00		
Females	Days	0.00004	0.00003	257	1.689176	0.0924	418.64	-202.3216
	H.Exposure.Level.1	0.09204	0.04998	257	1.841536	0.0667		
	H.Exposure.Level.2	0.17788	0.04887	257	3.640107	0.0003		
	H.Exposure.Level.3	0.17765	0.05221	257	3.402395	0.0008		
<i>C_AP_HR75 / CA</i>								
All Patients	Days	0.00002	0.00001	811	4.778954	0E+00	2674.138	1344.069
	H.Exposure.Level.1	0.05655	0.01070	811	5.284006	0E+00		
	H.Exposure.Level.2	0.06166	0.01024	811	6.019479	0E+00		

	H.Exposure.Level.3	0.08000	0.01040	811	7.696224	0E+00		
Males	Days	0.00002	0.00001	550	4.104246	0E+00	-	978.6774
	H.Exposure.Level.1	0.05617	0.01229	550	4.570086	0E+00	1943.355	
	H.Exposure.Level.2	0.05482	0.01164	550	4.710096	0E+00		
	H.Exposure.Level.3	0.08586	0.01157	550	7.424323	0E+00		
Females	Days	0.00002	0.00001	257	2.369984	0.0185	-	410.4849
	H.Exposure.Level.1	0.03297	0.01826	257	1.805227	0.0722	806.9698	
	H.Exposure.Level.2	0.06411	0.01786	257	3.589983	0.0004		
	H.Exposure.Level.3	0.06855	0.01909	257	3.590865	0.0004		
<i>C_PH / CA</i>								
All Patients	Days	-0.00004	0.00001	811	-4.989103	0E+00	-	114.8516
	H.Exposure.Level.1	-0.01120	0.02041	811	-0.548578	0.5834	215.7032	
	H.Exposure.Level.2	-0.10747	0.01955	811	-5.497201	0E+00		
	H.Exposure.Level.3	-0.18195	0.01984	811	-9.171153	0E+00		
Males	Days	-0.00004	0.00001	550	-3.439231	0.0006	-	82.81741
	H.Exposure.Level.1	-0.06511	0.02450	550	-2.657892	0.0081	151.6348	
	H.Exposure.Level.2	-0.13868	0.02327	550	-5.958834	0E+00		
	H.Exposure.Level.3	-0.22848	0.02315	550	-9.86833	0E+00		
Females	Days	-0.00006	0.00002	257	-3.811813	0.0002	-	45.07121
	H.Exposure.Level.1	0.12933	0.03421	257	3.78028	0.0002	76.14242	
	H.Exposure.Level.2	-0.02369	0.03343	257	-0.708426	0.4793		
	H.Exposure.Level.3	-0.06000	0.03567	257	-1.681998	0.0938		

Supplementary Table 9.:

ANOVA Comparisons of Cross-Sectional Models Polynomial in Opiate Duration

In Table 1.

Model	RSS	
m1	84.517	
m2	83.888	
m3	84.014	
m4	84.517	
m1234	83.731	
Comparison	F	P-value
m1 v m2	4.9694	0.02613
m1 v m3	3.9729	0.04665
m1 v m4	-	-
m2 v m3	-	-
m2 v m4	4.9694	0.02613
m3 v m4	3.9729	0.04665
m1234 v m1	1.2372	0.2899
m1234 v m2	0.3093	0.8718
m1234 v m3	0.5559	0.6948
m1234 v m4	1.2372	0.2899

RSS – Residual Sum of Squares
m1 – Opiate Exposure Duration - Linear Model
m2 – Opiate Exposure Duration - Quadratic Model
m3 – Opiate Exposure Duration - Cubic Model
m4 – Opiate Exposure Duration - Quartic Model
m1234 – Opiate Exposure Duration – Combined Linear, Quadratic, Cubic and Quartic Model

Supplementary Table 10.:

Summary of Longitudinal Models Polynomial in Opiate Duration

Model	Variable Statistics					Model	
Parameter	Value	Std.Error	DF	t-value	p-value	AIC	LogLik
1 Order- Linear							
H.Dose:H.Dura.n	0.0045	0.0013	814	3.5512	0.0004	1068.74	-530.37
2 Order- Quadratic							
H.Dura.n ²	-0.0009	0.0003	809	-3.5503	0.0004	1138.29	-560.15
H.Dura.n: H.Dura.n ²	2.9E-05	0.00000838	809	3.4714	0.0005		
H.Dose:H.Dura.n: H.Dura.n ²	-0.0001	0.00002745	809	-3.2360	0.0013		
H.Dose: H.Dura.n ²	0.0041	0.0014	809	2.9052	0.0038		
H.Dose	0.1659	0.0830	809	1.9994	0.0459		
H.Dose:H.Dura.n	-0.0407	0.0204	809	-1.9982	0.0460		
3 Order - Cubic							
H.Dura.n ³	0.0000	1.2526E-05	811	-3.3596	0.0008	1156.22	-571.11
H.Dose: H.Dura.n ³	0.0001	1.9606E-05	811	4.0694	0.0001		
H.Dura.n: H.Dura.n ³	1.3E-06	3.94E-07	811	3.3670	0.0008		
H.Dose:H.Dura.n: H.Dura.n ³	-2.4E-06	6.14E-07	811	-3.8553	0.0001		
4 Order- Quartic							
H.Dose	0.0924	0.0358	810	2.5811	0.0100	1171.45	-577.73
H.Dura.n	-0.0065	0.0019	810	-3.3983	0.0007		
H.Dose: H.Dura.n ⁴	1.9E-06	0.0000006	810	3.0901	0.0021		
H.Dura.n: H.Dura.n ⁴	1.0E-08	0.0E+00	810	2.9797	0.003		
H.Dose:H.Dura.n: H.Dura.n ⁴	-6.0E-08	0.00000002	810	-3.0810	0.0021		
1, 2 & 4 Order							
H.Dura.n: H.Dura.n ²	-0.0023	0.0008	804	-3.0322	0.0025	1310.95	-641.48
H.Dose:H.Dura.n: H.Dura.n ²	0.0050	0.0017	804	3.0052	0.0027		
H.Dura.n ⁴	0.0002	0.00005279	804	3.0026	0.0028		
H.Dose: H.Dura.n ²	-0.0270	0.0092	804	-2.9399	0.0034		
H.Dose: H.Dura.n ⁴	-0.0003	0.0001	804	-2.9034	0.0038		
H.Dura.n: H.Dura.n ⁴	-4.5E-06	0.00000156	804	-2.8937	0.0039		
H.Dura.n ²	0.0110	0.0039	804	2.8136	0.0050		
H.Dura.n ² : H.Dura.n ⁴	5.0E-08	0.00000002	804	2.7676	0.0058		
H.Dose:H.Dura.n: H.Dura.n ⁴	9.0E-06	0.00000327	804	2.7629	0.0059		
H.Dose: H.Dura.n ² : H.Dura.n ⁴	-9.0E-08	0.00000003	804	-2.6261	0.0088		
H.Dose	0.1584	0.0714	804	2.2175	0.0269		

Supplementary Table 11.:

ANOVA Comparison of Longitudinal Models of Table 10

Model	AIC	LogLik
m1	1049.67	-520.83
m2	1040.85	-511.42
m3	1043.21	-514.60
m4	1043.11	-513.56
m124	1041.09	-506.54
Comparison	L.Ratio	P-value
m1 v m2	18.82	0.0021
m1 v m3	12.46	0.0060
m1 v m4	14.55	0.0057
m2 v m3	6.36	0.0416
m2 v m4	4.27	0.0388
m3 v m4	2.09	0.1482
m124 v m1	28.58	0.0015
m124 v m2	9.76	0.0824
m124 v m3	16.12	0.0241
m124 v m4	14.03	0.0294

AIC – Akaike Information Criteria

Log Lik. - Log Likelihood Ratio

L. Ratio - Log Likelihood Ratio

m1 - Opiate Exposure Duration - Linear Model

m2 - Opiate Exposure Duration - Quadratic Model

m3 - Opiate Exposure Duration - Cubic Model

m4 - Opiate Exposure Duration - Quartic Model

m124 - Opiate Exposure Duration – Combined Linear, Quadratic, and Quartic Model

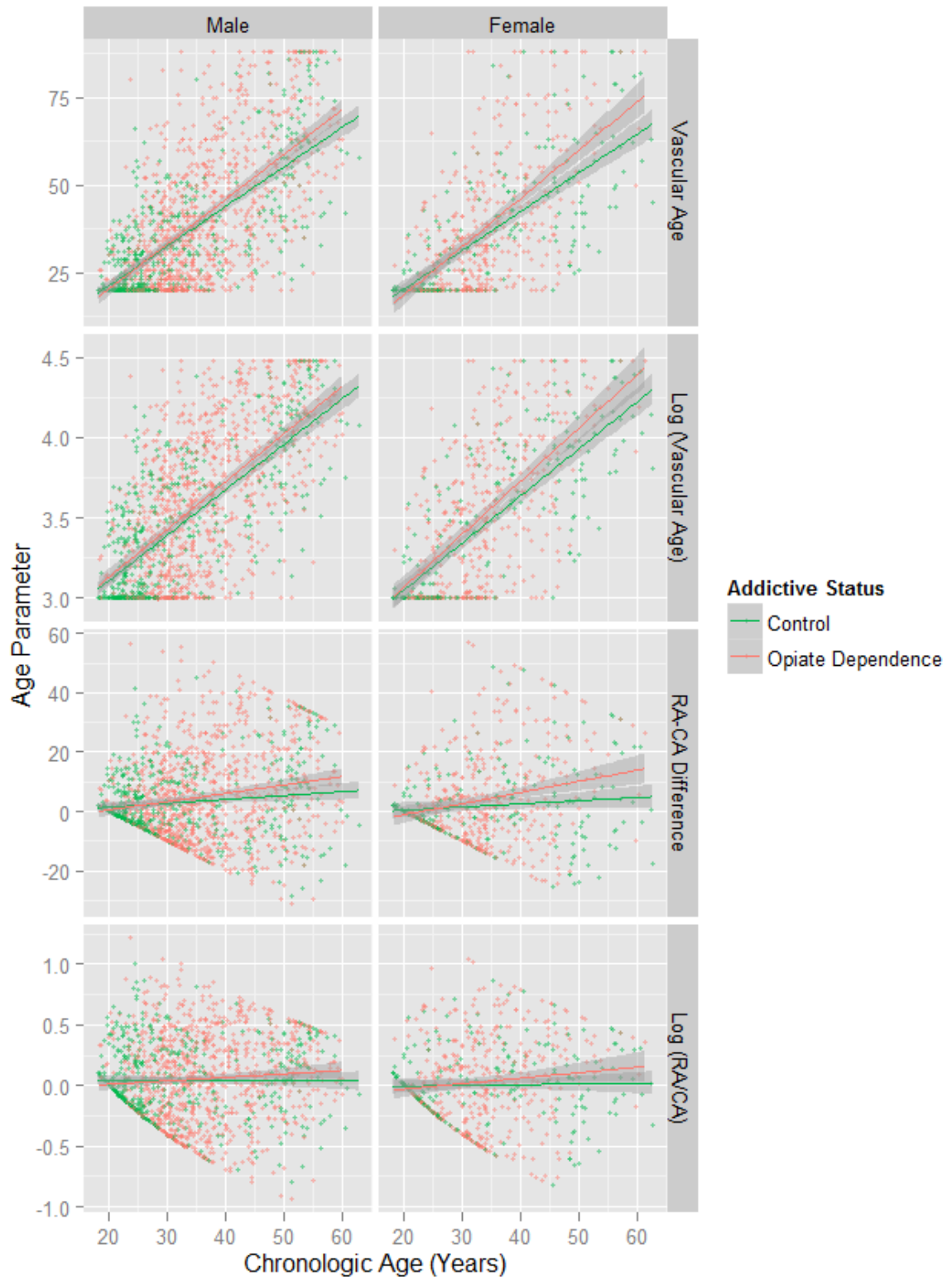
Supplementary Table 12.:

Full Multivariate Analysis of Log (RA/CA) Including All Biochemical Variables

Parameter	Variable Statistics				Model Summaries		
	Estimate	Std. Error	t Value	Pr(> t)	F	dF	P
<i>Both Sexes</i>							
H.Dura.n: Height: SP : CRP	0.0003	0.0001	2.835	0.0048	3.030	12, 381	0.00044
H.Dura.n: Height: CRP	-0.0014	0.0005	-2.82	0.0051			
H.Dose: CRP	6.2416	2.3936	2.608	0.0095			
H.Dose: SP : CRP	-1.2903	0.4964	-2.599	0.0097			
H.Dose: Height: Cigs.d: SP	0.0004	0.0001	2.487	0.0133			
H.Dose: Height: Cigs.d	-0.0017	0.0007	-2.432	0.0155			
H.Dose: Cigs.d: SP : CRP	0.5385	0.2346	2.295	0.0223			
H.Dose: Cigs.d: CRP	-2.5285	1.1265	-2.245	0.0254			
H.Dose: Height: Cigs.d: SP : CRP	-0.0029	0.0013	-2.137	0.0332			
H.Dura.n: Cigs.d: SP : CRP	-0.0020	0.0010	-2.103	0.0361			
H.Dose: Height: Cigs.d: CRP	0.0134	0.0065	2.082	0.0380			
H.Dura.n: Cigs.d: CRP	0.0096	0.0046	2.079	0.0383			
<i>Males</i>							
H.Dose: Height: Cigs.d: CRP	-0.0007	0.0002	-3.534	0.0005	3.323	10, 264	0.0004
H.Dose: Cigs.d: SP : CRP	0.0214	0.0066	3.224	0.0014			
H.Dura.n: Height: CRP	-0.0008	0.0003	-2.984	0.0031			
H.Dura.n: Height: SP : CRP	0.0002	0.0001	2.969	0.0033			
H.Dose: Height: CRP	0.0231	0.0081	2.863	0.0045			
H.Dose: Height: SP : CRP	-0.0046	0.0017	-2.723	0.0069			
H.Dose: Height: Cigs.d: SP	0.0004	0.0001	2.716	0.0070			
H.Dose: Height: Cigs.d	-0.0019	0.0007	-2.583	0.0103			
Cigs.d: CRP	0.1028	0.0450	2.284	0.0232			
Cigs.d: SP : CRP	-0.0208	0.0093	-2.236	0.0262			
<i>Females</i>							
Cigs.d: CRP	-0.12299	0.04178	-2.944	0.00392	4.484	2, 116	0.01331
Cigs.d: SP : CRP	0.02583	0.00883	2.926	0.00413			

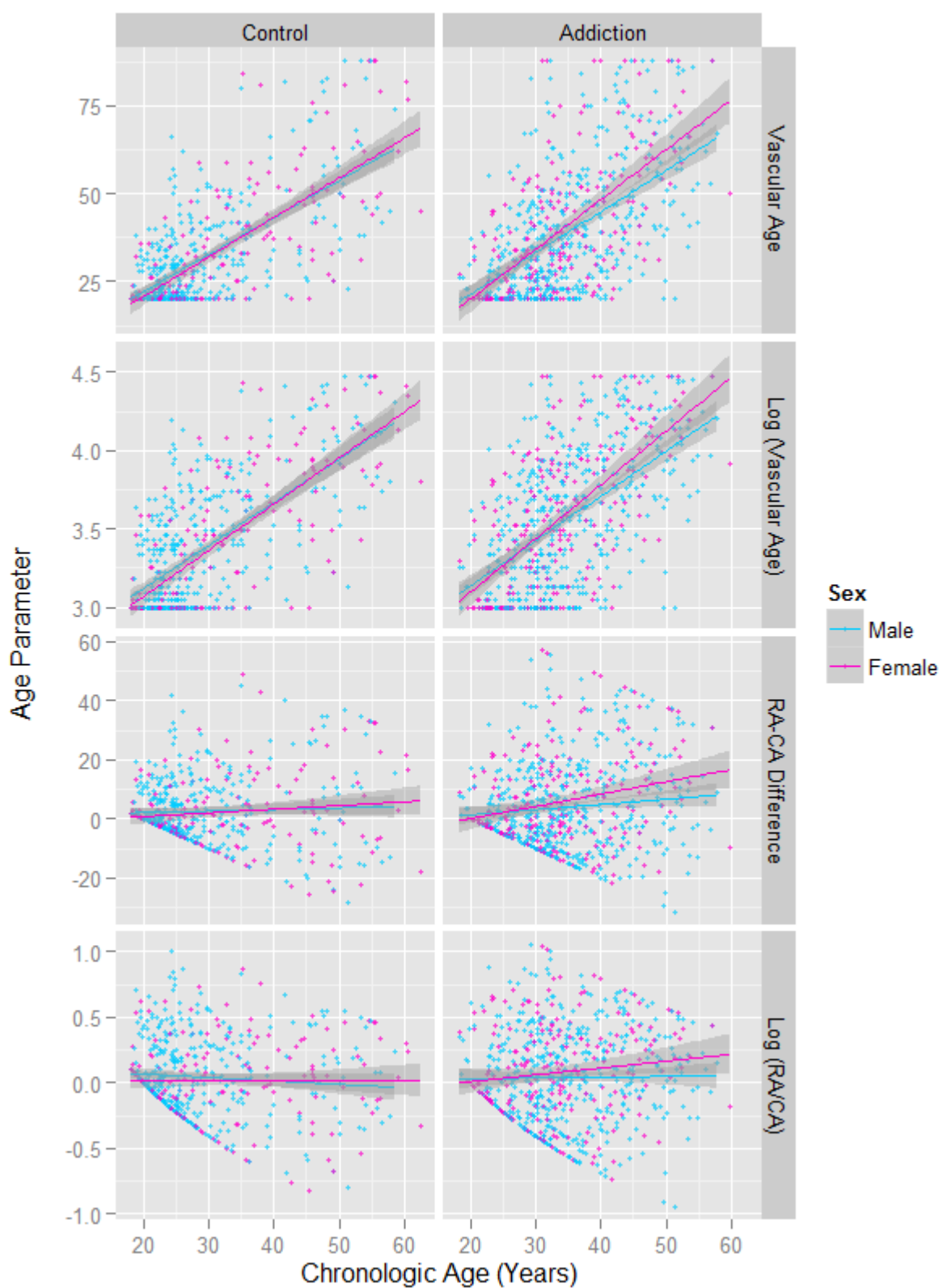
Suppl. Figure 1

Vascular Age Indices by Chronologic Age by Addictive Status by Sex



Suppl. Figure 2

Ageing Indices by Chronologic Age by Sex by Addictive Status



Suppl. Fig 3: Quartiles Long Logs by

